

# IBM ThinkPad 600



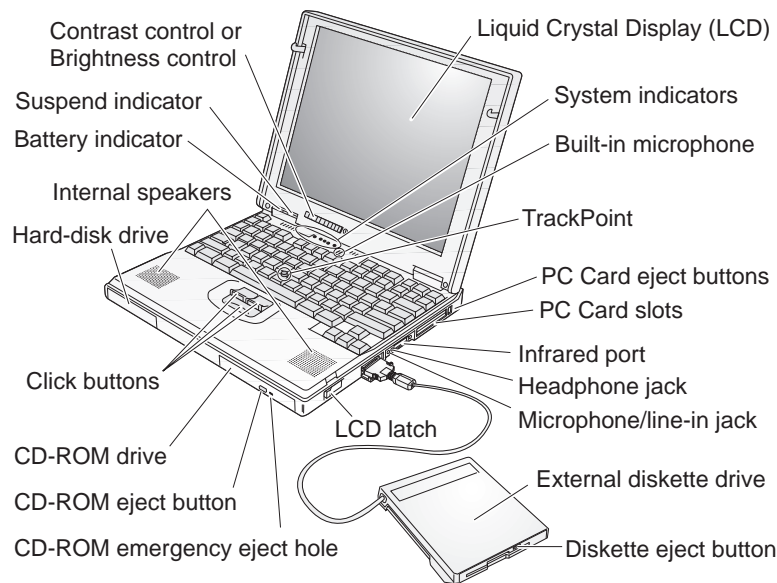
# Setup Guide

22L2323

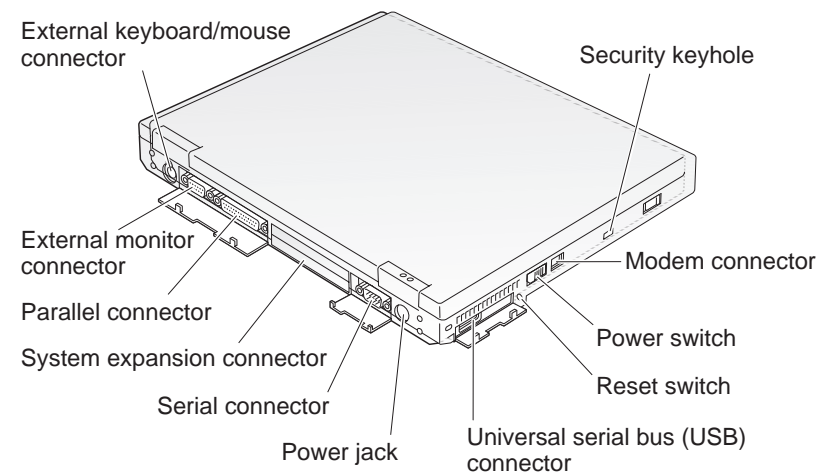
**Thank you** for purchasing the IBM ThinkPad 600 computer! We have worked hard to produce a slim, lightweight computer that is loaded with state-of-the-art technology and easy-to-use features—at an affordable cost. Please take a moment to register your computer by using the online registration program shipped with it. If you have a problem and you need service, please use our Web site or call the IBM HelpCenter in your country. The entire ThinkPad 600 development team has worked around the clock and across the globe to produce this outstanding computer for you, and we thank you for purchasing it.

**Thank you from all of us!**

## Front View (with external-diskette drive)



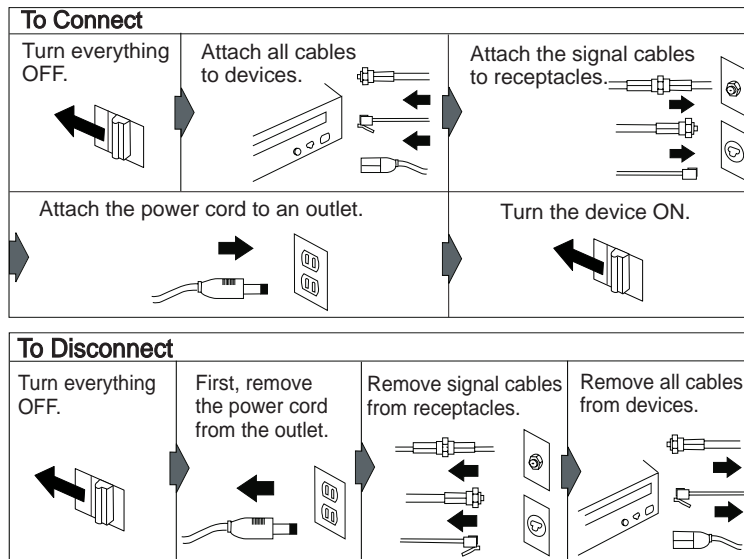
## Rear View



## Electrical Safety



**Electrical current from power, telephone, and communication cables is hazardous. To avoid shock hazard, connect and disconnect cables as shown below when installing, moving, or opening the covers of the product or attached devices. The 3-pin power cord must be used with a proper outlet.**



**Note:** In the U.K., by law:

The telephone line cable must be connected after the power cord.

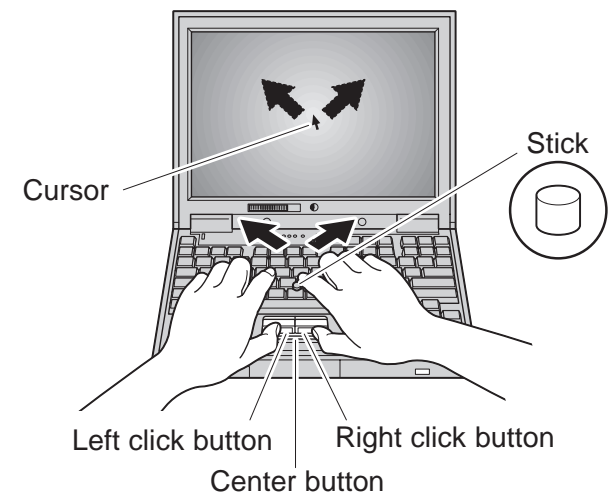
The power cord must be disconnected after the telephone line cable.

## Using the Trackpoint

The Trackpoint is a unique device for moving the cursor on the screen. You can perform all mouse operations with the Trackpoint. The left and right buttons function like the left and right buttons on a mouse. For an explanation of the center button, see the *User's Reference*.

To move the cursor, use the red-topped stick at the center of the keyboard. Press gently with your left or right index finger in the direction you want to move the cursor. To select and drag an object, press and hold one of the buttons with either thumb as required by your software.

**Click** means to press the left button once. **Double-click** means to press the left button twice within 1 second.

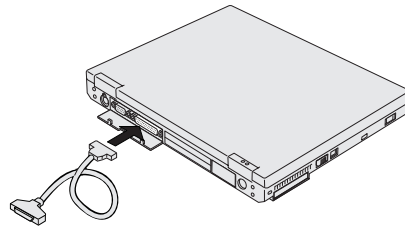


For more information about the Trackpoint, see the *User's Reference*.

## Setting Up Your Computer

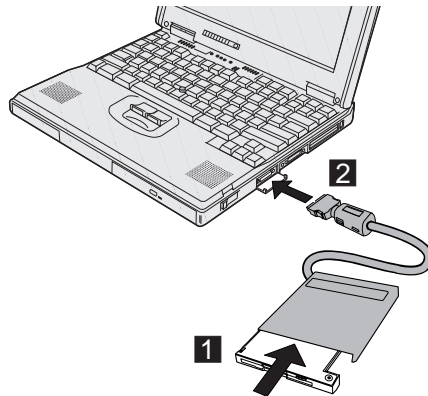
You are now ready to assemble and start your computer.

- 1** If you want to connect a printer to your computer, open the connector cover. Connect one end of the printer cable to the parallel connector and the other end to your printer. Then power on the printer.

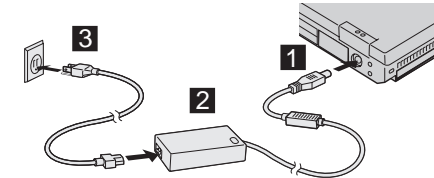


- 2** If you want to use the CD-ROM and the diskette drive at the same time, you can attach the diskette drive to the external-diskette-drive connector as follows:

Insert the diskette drive in the diskette-drive enclosure and connect it firmly **1**. Connect the cable to the external-diskette-drive connector **2**.

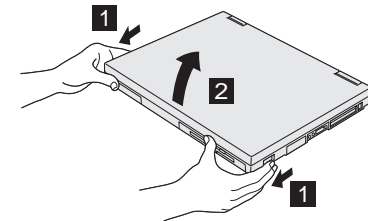


- 3** Connect the AC Adapter to the computer's power jack (at the rear of the computer) in the order shown.



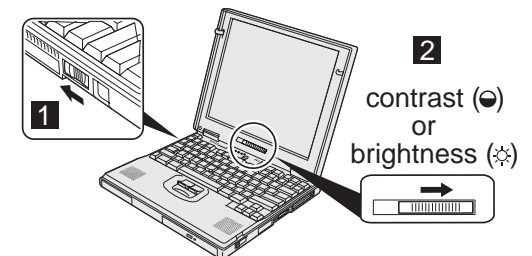
- 4** Open the liquid crystal display (LCD).

Pull the LCD latches **1** and open the LCD **2**. Then position the LCD so that it is convenient for viewing.



- 5** Power on the computer.

- a) Push and release the power switch **1**. The power switch automatically snaps back to its original position.
- b) Adjust the display's contrast or brightness **2**.



## Customizing Your Computer

After you complete the Windows setup by following the instructions on the screen, the **ThinkPad Customization Center** icon is on your Windows desktop. To help you customize your computer for your specific needs, we have provided a collection of setup wizards known as *ThinkPad Customization Center*.

To start the ThinkPad Customization Center, double-click on the **ThinkPad Customization Center** icon. The ThinkPad Customization Center is launched into the default Web browser (Internet Explorer 4.0). Follow the instructions on the screen.

**Note:** The **ThinkPad Customization Center** icon does not appear on the desktop of Windows NT. If you are using Windows NT, insert the ThinkPad Customization CD into the CD-ROM drive to start the Customization Center. To use the Customization Center, you need Internet Explorer Version 4.0 or later.

## Registering Your Computer

After setting up Windows 95 or Windows NT, take a few moments to complete the ThinkPad registration. The information provided by you will help IBM to better serve you in the future. To register from the Windows 95 or Windows NT desktop, do the following:

**1** Double-click on **Register**.

**2** Follow the instructions on the screen to complete the registration.

(If you want to register your computer later, follow the same procedure.)

If your computer uses another operating system, go to the following Web site to complete registration:

<http://www.pc.ibm.com/register>

## Getting More Information

After you have completed setting up your computer, you can start using it. If you want to learn more about your computer and its options, see the following:

ThinkPad 600 User's Reference	Online Book
Getting familiar with your computer Expanding features of your computer Protecting your computer Solving computer problems Getting service Features and specifications	Using your computer outside your home country Using PC cards Resolving system resource conflicts Solving computer problems Installing software System management Using PS2 commands
<b>Note:</b> To see the online book, click on <b>Start</b> and move the cursor to <b>Programs, ThinkPad 600</b> ; then click on <b>ThinkPad 600 User's Guide</b> .	

Check the following ThinkPad Web site for the latest information. When updates become available, they will be posted on:  
<http://www.pc.ibm.com/thinkpad>