

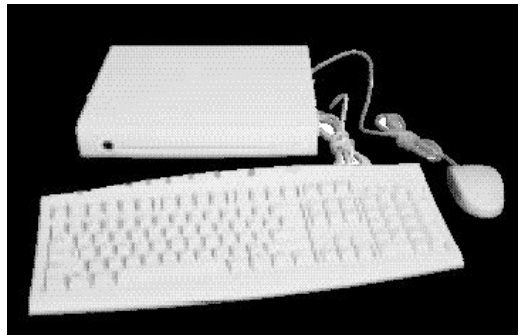
# BocaVision™

## Thin Clients

### *User's Handbook*

**Boca  
BV  
Vision**

with Citrix ICA®  
Support



Model: WT120  
10BaseT ICA Windows Terminal

**BOCA**  
RESEARCH



**Write down the following information for your reference:**

Serial No. \_\_\_\_\_ The serial number is located on the bottom of the unit.

MAC Address: \_\_\_\_\_ The Ethernet/MAC address is located near the serial number on the bottom of the unit.

Please locate the enclosed registration card, fill it out, and return it. Registering your product enables us to better serve you in the event your BocaVision unit requires service.

Boca Research designs, manufactures, markets and supports quality, cost-effective Internet access/thin client/server computing devices, data communications and networking products to facilitate the transmission of information on personal computers, computer networks and the Internet.

The Company also markets its products under the Global Village brand name and sells them worldwide through distributors, original equipment manufacturers (OEMs) and retailers. Boca Research is a U.S. corporation headquartered in Boca Raton, Florida with international operations and ventures worldwide.

Boca Research's WEB address: <http://www.bocaresearch.com>

---

**Copyright**

©1998. Boca Research, Inc. All rights reserved. No reproduction of this document in any form is allowed without permission in writing from Boca Research, Inc. Boca Research is not liable for any damages resulting from technical or editorial errors or omissions contained in this document. The information in this manual is subject to change without notice. Revisions to the product(s) in this manual may occur at any time without notice.

**Trademarks**

All Boca Research products are trademarks of Boca Research, Inc. All other references to computer systems, software, and peripherals use trademarks owned by their respective manufacturers.

**Publication Date: December, 1998**

Printed in the U.S.A.

9334.P65



## **READ THESE SAFETY INSTRUCTIONS BEFORE INSTALLING AND OPERATING THIS EQUIPMENT**

TO REDUCE THE RISK OF ELECTRIC SHOCK, DO NOT REMOVE COVER (OR BACK). THERE ARE NO USER-SERVICEABLE PARTS INSIDE. OBTAIN SERVICE FROM QUALIFIED SERVICE PERSONNEL.

For proper operating voltage, check the identification/rating label on the underside of the unit.

NOTE: FCC regulations state that unauthorized changes to this product could void your authority to operate it. Refer to Appendix A for additional details.



**WARNING:** Any changes to this unit, not approved by Boca Research, Inc. may void your warranty.

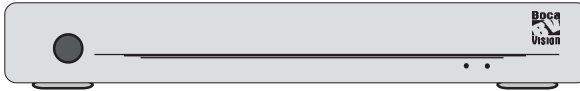
# Contents

<b>1—Introduction .....</b>	<b>7</b>
<b>2—Getting Started .....</b>	<b>8</b>
<b>3—Summary of Connectors and LEDs .....</b>	<b>9</b>
<b>4—Standard Connections .....</b>	<b>11</b>
<b>5—Workstation Interface: Windows or Web Browser ....</b>	<b>14</b>
Screen Saver .....	14
Welcome Screen .....	15
Option Screens .....	16
Text Options .....	16
Printing Options .....	17
Sound Options .....	17
<b>6—Web Browser User Interface .....</b>	<b>18</b>
Browser Toolbars .....	18
Main Toolbar .....	18
Go To .....	18
Secondary Toolbar .....	19
Check Progress Indicator .....	19
History .....	20
Favorites .....	21
Options .....	22
Print .....	22
Print Frames .....	22
Toolbar Buttons .....	23

Progress Indicator .....	23
Up/Down Arrows .....	23
Web Page Links .....	23
Button Types .....	23
Submit Button .....	23
Check Boxes .....	23
Radio Buttons .....	23
Pop-up Menu Button.....	24
Text Entry Field .....	24
Codec Controls .....	24
Secure Socket Layer (SSL) Indicator .....	24
Web Page Password Challenge .....	24
Image Map Cursor .....	25
Mouse Cursors .....	25
System Busy Indicator .....	25
Frame Navigation Graphics .....	25

**Appendix A: FCC Regulatory Statements ..... 26**

# 1—Introduction



BocaVision Thin Clients enable inexpensive access to corporate (Winframe or Metaframe) network servers. Built-in browser software provides a variety of user options. Configured with a 10BaseT Ethernet connection, monitor (or TV), keyboard, mouse and/or printer, BocaVision delivers exciting network access solutions.

Continue with the next page to get started by checking the contents of your package. If you encounter problems during connection of components or operation of the unit, please contact your network administrator for assistance.

## 2—Getting Started

Before making connections, review the list below to ensure your package is complete.

- Windows Terminal



- PS/2 Mouse and Keyboard



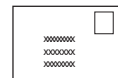
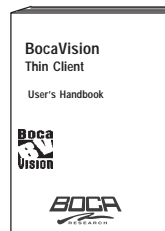
- Key cap overlay



- AC Power Cord



- User's Handbook and Registration Card





## 3—Summary of Connectors

### Connectors and LEDs

#### FRONT VIEW:

**IR Receiver**

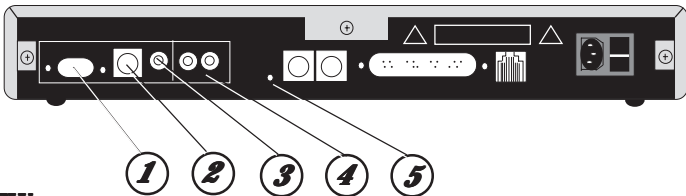
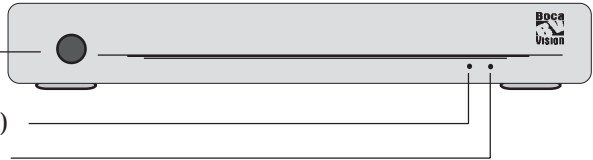
**Status LEDs**

**LED1**—Power (GREEN)

**LED2**— (RED)\*

\*(flashing: looking for boot server)

(off: connected to boot server)



#### REAR VIEW:

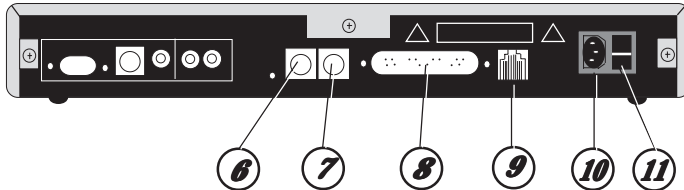
**1—VGA Monitor port.** Use this port when connecting the unit to a computer monitor.

**2—S-video Output.** Use this port if using a television and the TV features an S-video connector. S-video may provide improved clarity of video display over composite video.

**3—Composite video output.** Use a video cable (not supplied) to connect this port to the VIDEO-IN jack on your TV.

**4—Right/Left audio channels.** Use audio cables (not supplied) to connect these ports to the AUDIO-IN jacks on your computer speakers, or your TV.

**5—Reset Switch.** Use this reset switch to recover from memory corruption. Pressing the reset switch once briefly will clear all unprotected RAM.



**6—Mouse jack.** Connect the PS/2 mouse.

**7—Keyboard jack.** Connect the PS/2 keyboard.

**8—Parallel port (DB-25).** Connect a printer to the unit.

**9—10BaseT jack (RJ-45).** Attach one end of an RJ-45 cable to this jack and the other end to an RJ-45 wall connector.

**10—AC Power connector.** Connect the AC power cord here. Attach the other end to your wall outlet. **(MAKE THIS CONNECTION LAST).**

**11—Power Switch.** Simple rocker to power the unit on or off.

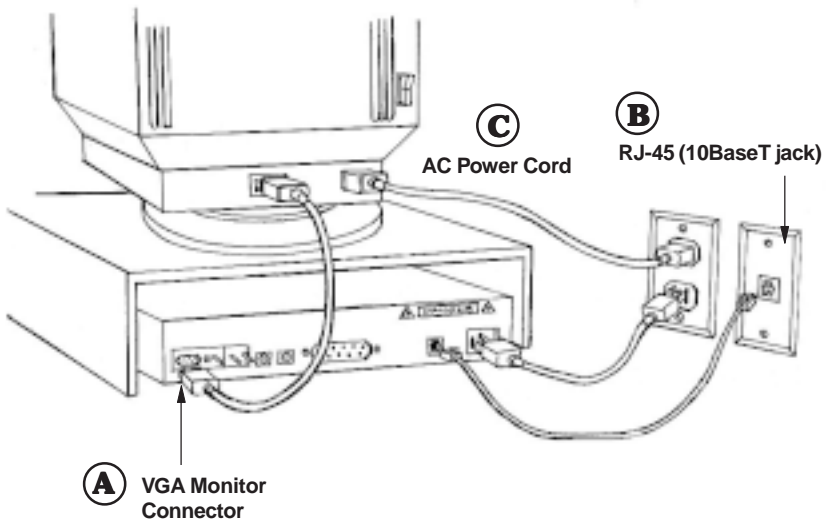
## 4—Standard Connections

### Common Installation with VGA Monitor

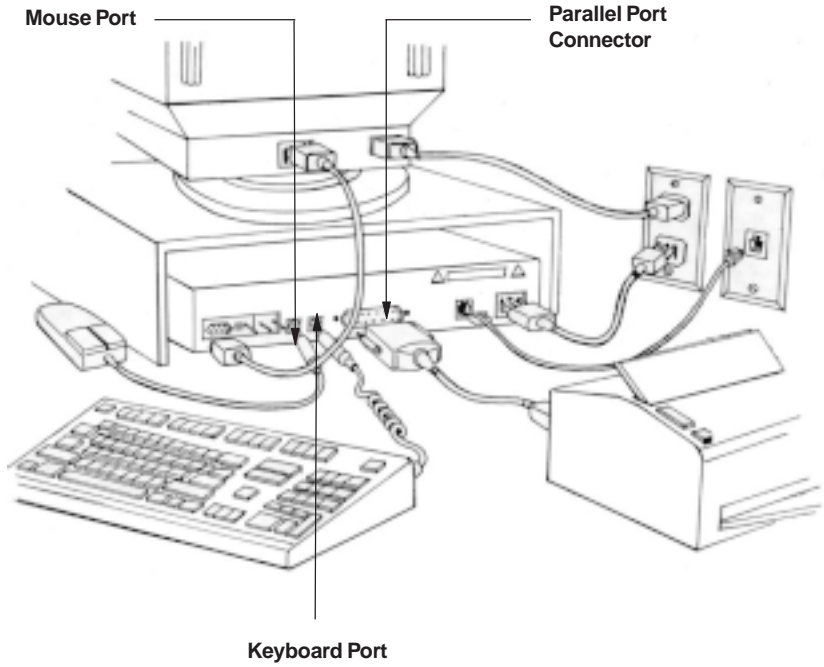
Before you can access the network, you need to connect the unit to:

- A. A VGA Monitor
- B. RJ-45 wall jack for 10Base-T network connection
- C. An AC electrical outlet

A common installation is depicted below. To connect peripheral devices such as a mouse, keyboard, and printer, see the next page.

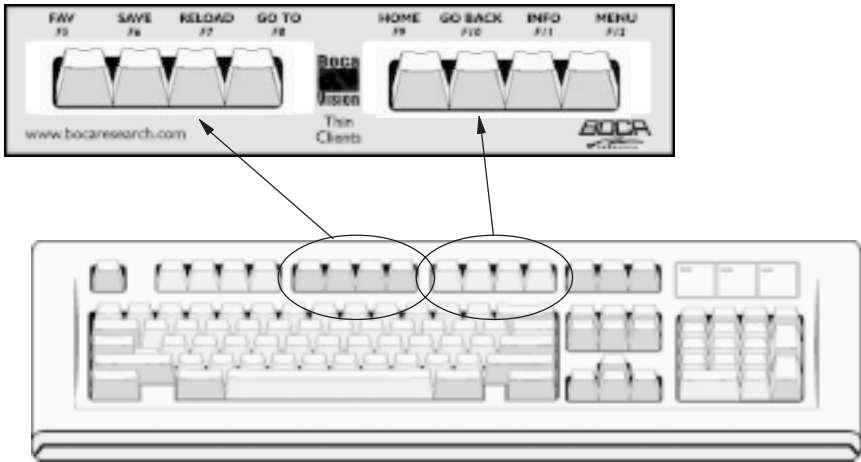


## Connecting Other Peripherals



## Keyboard Browser Functions

When connected to your corporate server to run Windows applications, the function keys on the keyboard operate as they normally would. When you switch to the Web Browser, refer to the keycap map overlay supplied with your keyboard. Function keys F5 through F12 change as explained below. Keys F1 through F4 are unaffected.



**F5: FAV.** Displays your Favorites List (web sites).

**F6: SAVE.** Saves the current web page to your list of favorites.

**F7: RELOAD.** Reloads or refreshes the current web page.

**F8: GO TO.** Allows you to enter and access a specific web site.

**F9: HOME.** Returns you to your designated home page.

**F10: GO BACK.** Returns you to the previous web page.

**F11: INFO.** Displays information for the current web page.

**F12: MENU.** Toggles the Main Toolbar at the bottom of the screen.

To exit the browser, press the **CTRL** and **F1** keys simultaneously. This returns you to the Welcome screen.

## 5—Workstation Interface: Windows and the Web Browser

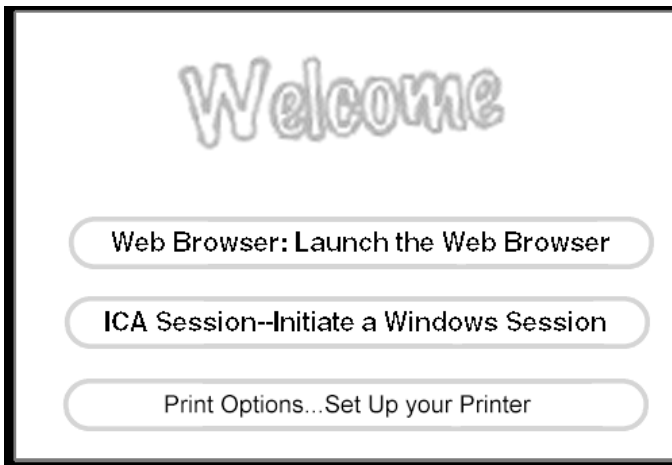
### Screen Saver

If the unit detects no input from you for a period of time as specified by the network administrator, the screen saver image is displayed. Any subsequent input removes the screen saver image.



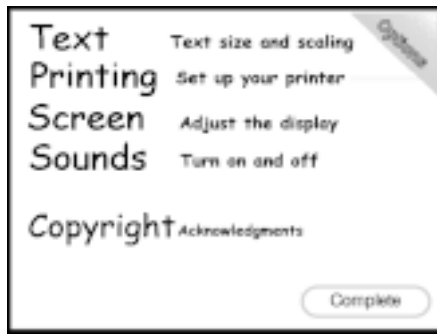
## Welcome Screen

When you power on the BocaVision unit, you are presented a screen similar to the one shown below. You have three choices. Select the top button to launch the web browser. Select the middle button to initiate a network Windows session. Select the bottom button to set options for your printer.



## Option Screens

You access the Options Menu by pressing F12 to display the Main Toolbar. Select **More** to display the Secondary Toolbar and select **Options**. This is useful for setting text display and sound preferences and necessary to configure your printer.



### Text Options

This screen allows you to configure the text size and whether web pages should be horizontally scaled to fit the screen.





## Printing Options

This screen allows you to configure the use of a printer (see your network administrator for the proper printer code), choose whether you require color or black/white printing, and select the paper size you will use.

**Printing** ● Set up your printer

Please enter the three digit code that matches your type of printer from the list in your manual.

Do you require colour or black/white printing ?

Color  Black/White

What paper size will you use ?

Letter  Legal

Complete

## Screen Positioning Options

This screen allows you to center the display when connected to a television set.

**Screen** ● Adjust the display

Use the arrow buttons to position the screen so that it is centralized on your television screen.

↑  
← ● →  
↓

Complete

## Sound Options

This screen allows you to turn the sound effects and background music on / off.

**Sounds** ● Turn on and off

Do you want the NC to play sound effects ?

Yes  No

Do you want the NC to play background music ?

Yes  No

Complete

When you have finished setting any options, selecting Complete saves the changes and returns you to the Welcome screen.

## 6—Web Browser

This section provides details of the Web Browser user interface.

### Browser Toolbars

#### Main Toolbar

The main toolbar appears when you connect to the Internet. You can toggle the toolbar on and off by pressing F12 on your keyboard.



- |                           |   |
|---------------------------|---|
| Choose <b>Home</b>        | To go to the home page specified by the network administrator.                            |
| Choose <b>Back</b>        | To go back to the previous web page in history list.                                      |
| Choose <b>Fwd</b>         | To go forward to the next web page in the history list.                                   |
| Choose <b>Go To</b>       | To display the URL Web page entry pop-up.   |
| Choose <b>Email</b>       | To go to the e-mail site specified by the network administrator.                          |
| Choose <b>More...</b>     | To display the secondary toolbar.   |
| Use <b>Up/Down Arrows</b> | To page up and down the document.   |
| Check Progress Indicator  | This moves when the page is loading. If it is not moving selecting this reloads the page. |

#### Go To

The Go To pop-up appears above the main toolbar when you select **Goto** from the main toolbar. This toolbar allows you to enter a Web Page URL in a text entry field. The text entry field contains the default text <http://www>.



Choose the **URL Entry field** to enter a URL. Pressing OK on the keyboard closes the pop-up and displays the web page requested.  
 Choose **Last** to insert the URL previously entered in the field.  
 Choose **Current** to insert the current URL into the field.

## Secondary Toolbar

The secondary toolbar appears when you select **More...** from the Browser main toolbar



Choose **History** To display the history page.  
 Choose **Favs** To display the Favorites list.  
 Choose **Save** To save the current page to the list of favorites.  
 Choose **Options** To display the options pages.  
 Choose **Print** To display the print pop-up screen.  
 Choose **More...** To display the main toolbar.  
 Use **Up/Down Arrows** To page up and down in the document.

## Check Progress Indicator

This moves when the page is loading. If it is not moving selecting this reloads the page.

## History

The History page appears when you select **History** from the secondary toolbar. Two history lists are available. The first is the recent browser history list and the second is the alphabetical browser history list. The button in the top right corner of the page toggles between them.



Clicking on any of the titles in either list will cause the Browser to retrieve and then display the requested page.



## Favorites

The Favorites page appears when you select **Favs** from the second toolbar.



Clicking on any of the titles in the list causes the Browser to retrieve and then display the requested page. Clicking the **Delete Favorites** button displays the following page.



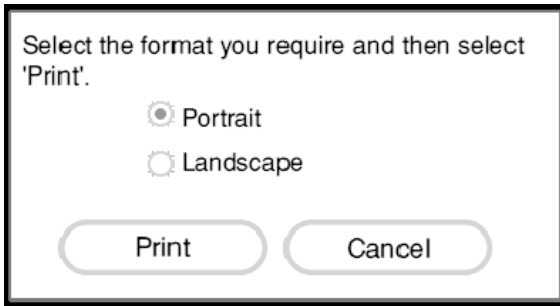
Check the boxes of the pages you wish to remove and then click the **Delete** button. Clicking the **Back to Favorites** button returns you to the Favorites List.

## Options

The main options page appears when you select **Options** from the secondary toolbar. This page is described in detail in the Options section (page 17).

## Print

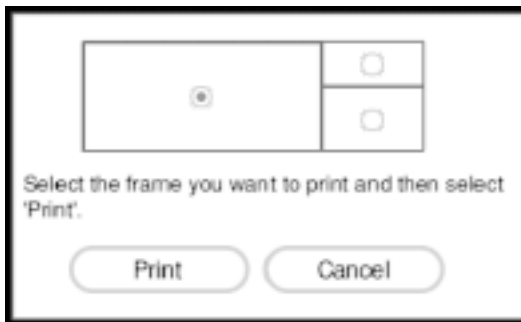
The Print pop-up appears in the center of the screen when you select **Print** from the secondary toolbar or press print on the keyboard.



Clicking **Print** prints the page, while clicking **Cancel** closes the pop-up.

## Print Frames

If the page you have requested to print contains frames then the following screen appears.



Chooses the frame you wish to print and then click **Print** to print the page. Alternatively clicking **Cancel** closes the pop-up screen.

## Toolbar Buttons

Each of the toolbar buttons has two states: unhighlighted and highlighted.



## Progress Indicator

While the indicator is moving, indicating that data is being transferred, you can stop the transfer by highlighting the indicator and pressing ENTER. If the indicator is not moving, highlighting it and pressing ENTER will reload the web page.



## Up/Down Arrows

The up and down arrows allow you to scroll the web page a full screen at a time from the toolbar.



## Web Page Links

On web pages the Browser highlights text and image links with a highlight rectangle.

## Button Types

A number of standard button types are used by the Browser for displaying web pages containing forms.

### Submit Button



### Check Boxes



### Radio Buttons



**Pop-up Menu Button****Text Entry Field****Codec Controls**

The codec controls appear when you select a web link to a web resource requiring the controls.

**Secure Socket Layer (SSL) Indicator**

The appearance of the SSL icon indicates a secure connection. The icon appears above the up and down arrows on the toolbar.

**Web Page Password Challenge**

Some web pages, e.g., <http://www.timeout.co.uk/TO/Info/> require a password screen.

Enter your user name and password  
for Time Out at [www.timeout.co.uk](http://www.timeout.co.uk)

Name

Password



### Image Map Cursor

When you highlight an image map and press ENTER to navigate over the map, the image map cursor appears.



### Mouse Cursors

The following cursors are used.



From left to right: Standard mouse cursor, Page drag cursor, Reposition frame borders left/right, and Reposition frame borders up/down.

### System Busy Indicator

The following series of animations are displayed when the system is working and is not accepting input.



### Frame Navigation Graphics

The frame navigation controls appear embedded in the frame borders on HTML pages containing frames. They allow you to move between frames using the arrow keys and the ENTER key. Each arrow has a selected and unselected state.



## Appendix A: FCC Regulatory Statement

“This device complies with part 15 of the FCC rules. Operation is subject to the following two conditions:

- (1) This device may not cause harmful interference.
- (2) This device must accept any interference received including interference that may cause undesired operation.

This equipment has been tested and found to comply with the limits for a **Class B** digital device, pursuant to Part 15 of FCC rules. These limits are designed to provide reasonable protection against harmful interference in a residential installation. This equipment generates, uses, and can radiate radio frequency energy and, if not installed in accordance with the instructions, may cause harmful interference to radio communications. However, there is no guarantee that interference will not occur in a particular installation. If this equipment does cause harmful interference to radio or television reception, which can be determined by turning the equipment off and on, the user is encouraged to try to correct the interference by one or more of the following measures:

- Re-orient or relocate the receiving antennae.
- Increase the separation between the equipment and the receiver.
- Connect the equipment into an outlet on a circuit different from that to which the receiver is connected.
- Consult the dealer or an experienced radio/TV technician for help.

Note: This unit was tested with shielded cables on the peripheral devices. Shielded cables must be used with the unit to insure compliance. (external units only)

Note: The manufacturer is not responsible for any radio or TV interference caused by unauthorized modifications to this equipment. Such modifications could void the user's authority to operate the equipment





**Manual Part # 9334-01**  
**12/98**