

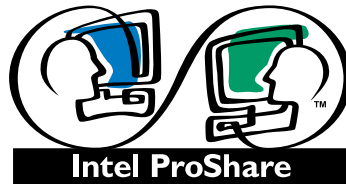
WEBGLIDER

ISDN Terminal Adapter



Complimentary Software Services

Installation Guide



Product Code: TU120AE

Contents

INTRODUCTION	4
Registering with PSINet	5
Introduction	5
If You Have an Existing Account	5
Registering by Phone	6
Windows 95.....	6
Installing Dial-Up Networking	7
Installing the TCP/IP Protocol.....	8
Valet and Windows 95	10
Windows 3.x.....	15
Valet and Windows 3.x	17
Registering with an Analog Modem.....	22
Valet and Windows 95	22
Valet and Windows 3.x	26
Registering with CompuServe	31
New Account	31
Existing Account.....	34
Using Intel's ProShare Premiere	36

INTRODUCTION

General Software Installation Notes

- **Setting up WEBGLIDER with your software:** Choose “WEBGLIDER” from the modem list (if a list is provided) or choose a standard/generic modem type (“standard autobaud” or “Hayes-compatible”) and set your baud rate to 115,200bps.
- When using the Microsoft Windows 95 Dialer with the WEBGLIDER for PPP Internet connection, add **&C1&D2&Q3** to **EXTRA SETTINGS** in the **Advanced Connection Settings**.

Registering with



Introduction

You have two options for registering:

1. By calling PSINet. Then follow instructions for either:

**Windows 95 (page 6) or
Windows 3.x (page 15)**

2. By analog (non-ISDN) modem (page 22).

IF YOU HAVE AN EXISTING ACCOUNT

(and do not plan to use the supplied software, do the following):

1. Install the WEBGLIDER as described in the *WEBGLIDER Quick Tour Installation Guide*. Choose “WEBGLIDER” for the Dial-up Network Connection icon (**Windows 95**), and in your Internet software setup. Or, choose “Standard V.34 28800bps modem” in the Internet software setup if the WEBGLIDER is not listed.
2. Add **&Q3 &C1 &D2** to your initialization string to enable PPP. Or, **&Q0 &C1 &D2** to enable V.120. PSINet’s ISDN server uses PPP, while CompuServe’s ISDN server uses V.120.

A. IF YOU ARE REGISTERING WITH PSINET BY PHONE

WINDOWS 95 Users - Registering with PSINet by Phone

1. Call **1-800-827-7482** (in the U.S.) to sign up for a new Internet account.
2. You will be prompted for information including, but not limited to, the following:
 - current credit card account information
 - connect type: **PPP**
 - PC or Mac: **PC**
 - operating system: **Windows 95**
3. Your account will be set up by PSINet and you will be given signon information. This will include your user name and password. Depending on service loads, you may be called back with your account number.

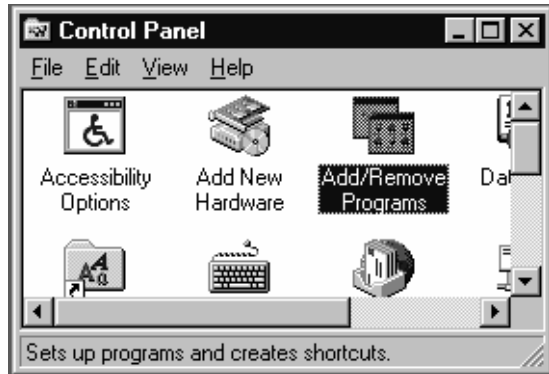
Following is a summary of the steps that **MUST** be completed in Windows 95 before you can access the Internet using the **WEBGLIDER**.

1. You must install and configure your **WEBGLIDER**. See the *WEBGLIDER Quick Tour manual*.
2. You must install and configure Dial-Up Networking. See page 7.
3. You must install the TCP/IP protocol. See pages 8-9.

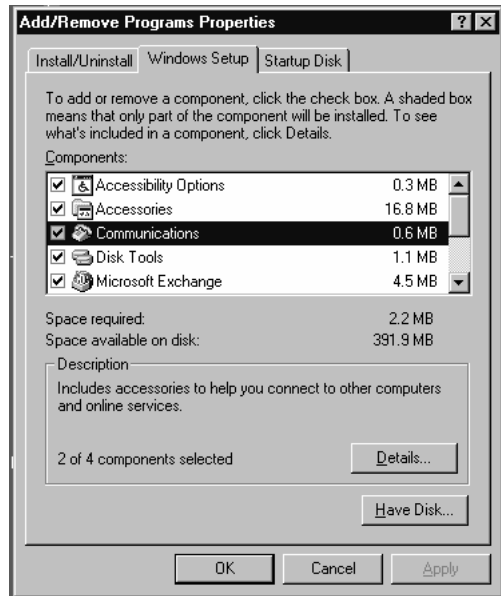
Installing and Configuring Dial-Up Networking

1. Start Windows 95 and select **START**, then **SETTINGS** then **CONTROL PANEL**.

2. In Control Panel, double click **ADD/REMOVE PROGRAMS**, then select the **WINDOWS SETUP** tab. This will list all Windows 95 components that can be added or removed.



3. Select **COMMUNICATIONS** then **DETAILS**, and check the box next to **DIAL-UP NETWORKING**, then select **OK**. You **MUST** select **APPLY**, (you may be asked for your original Windows 95 diskettes). Click **OK** for the changes to take effect. Windows will prompt you for identification information. Refer to the following **example**:



Computer Name: Bob's Computer (15 character limit).

WorkGroup: Bob's Family (15 character limit).

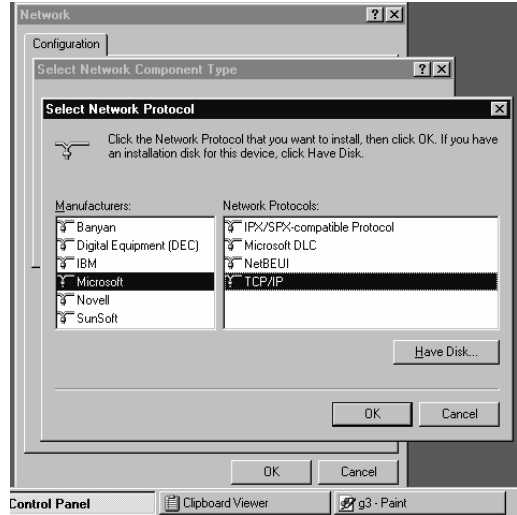
Computer Description: Super System (48 character limit).

Note: The Computer Name and WorkGroup cannot be the same.

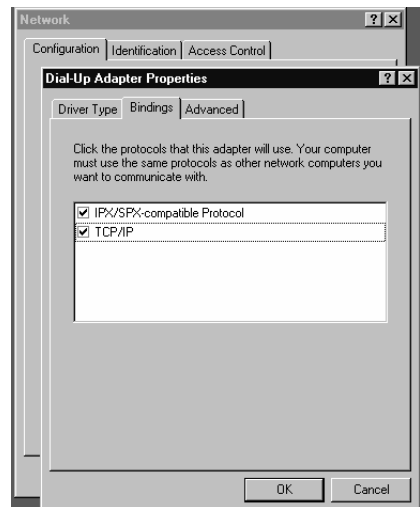
Installing TCP/IP protocol

1. Start Windows 95 and select **START** then **SETTINGS** then **CONTROL PANEL**.

2. In Control Panel, double click **NETWORK**, then select **DIAL-UP ADAPTER**, then **ADD, PROTOCOL, ADD**. Select **MICROSOFT** from the Manufacturers list, and **TCP/IP** from the Network Protocol list, then **OK**. (You may be asked for your original Windows 95 diskettes). TCP/IP will now be listed as an installed Protocol component in the Network window.



3. Select **DIAL-UP ADAPTER, PROPERTIES**, then the **BINDINGS** tab, and ensure that there is a check mark in the box next to TCP/IP. Select **OK**.



4. Click OK to finish and restart your system. **Click CANCEL and do not log in when Windows 95 restarts.**

READ THESE 4 NOTES BEFORE INSTALLING THE PSINET INTERNET VALET SOFTWARE:

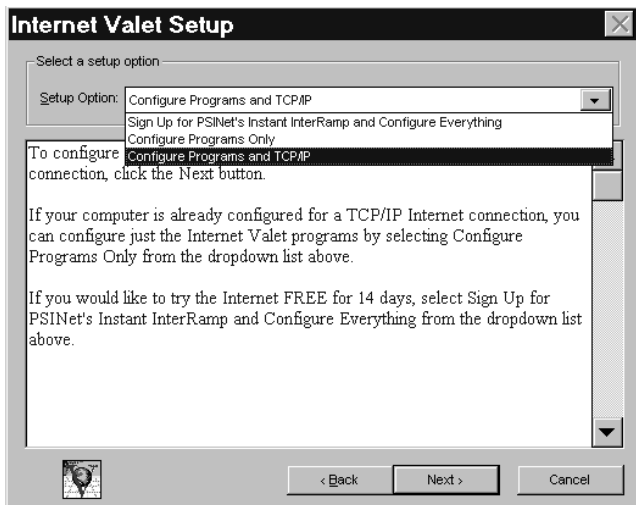
- 1. Spelling and case (upper/lower) are crucial; type in all information exactly as specified by PSINet.
- 2. During software installation, you will be required to enter account information provided to you by PSINet when you sign up for a new account.
- 3. Make sure the WEBGLIDER configuration software has already been installed. (See the *WEBGLIDER Quick Tour Installation Guide*.)
- 4. Turn on the WEBGLIDER before you make your first connection. **Remember: The DS indicator must be on solid before the WEBGLIDER is ready to dial out. If the DS light blinks continuously, you have made an error in programming the WEBGLIDER. See page 19 of the *WEBGLIDER Quick Tour Installation Guide*.**

Now, continue with the installation instructions for Valet and Windows 95 on the next page.

VALET and Windows 95

NOTE: If any version of Microphone software is installed on your system, read the SETUP.TXT file on the Internet Valet Disk1 •SETUP before continuing.

1. Insert the Internet Valet Disk1 •SETUP into your floppy drive.
2. Start Windows 95 click **START** then **RUN** then type **A:SETUP** or **B:SETUP** and click **OK** to begin the Internet Valet Installation. Follow all on-screen directions.
3. Select **CHANGE MODEM**. Choose the **WEBGLIDER** if available, or Standard Autobaud as the modem. Choose the COM port to which the **WEBGLIDER** is attached. Select your time zone. **Do not install the Winsock.**
4. Continue with **Internet Valet SETUP** and power on the **WEBGLIDER**. Click **NEXT** to continue.
5. At the Internet Valet Registration and Configuration screen click **NEXT**.



6. In the **SETUP OPTION** menu, use the down arrow to select **CONFIGURE PROGRAMS** and **TCP/IP** and click **NEXT**.

7. Fill in the Personal Information and click **NEXT**. If this screen has fields for **CREDIT CARD** information, you have selected the wrong Setup Option. Click **BACK** and choose **CONFIGURE PROGRAMS and TCP/IP**. When you register Internet Valet, you are eligible for free Technical Support from Software Ventures.

8. Fill in the **ACCOUNT INFORMATION** screen, with the information provided to you when you signed up with PSINet. Click **NEXT** to continue. Below are definitions for information you will be entering:

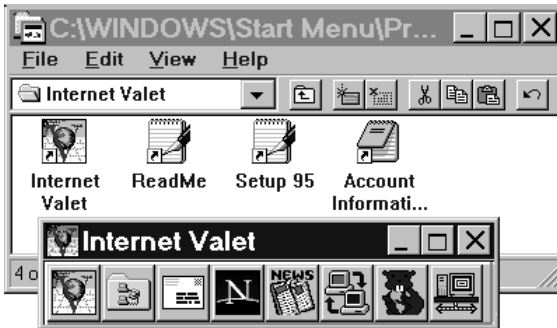
User Name/POP Login/Account Name (your user name)
Password/Account Password/Authentication (your password)
Email Address (your username @interramp.com)
SMTP Server (smtp.interramp.com)
POP3 Server (pop3.interramp.com)
NNTP Server (usenet.interramp.com)

**(NOTE: 'InterRamp'
has two R's)**

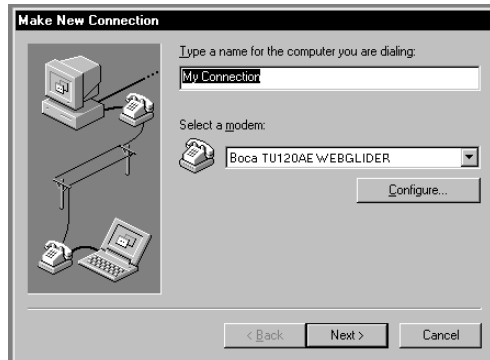
9. Fill in additional account information required (as shown below), then click **CONFIGURE** to finish configuring Internet Valet.

IP Address (leave blank)
Protocol (PAP)
Subnet Mask (leave blank)
Gateway IP (supplied by PSINet)
Domain Name (interramp.com)
DNS IP (supplied by PSINet)
Modem (WEBGLIDER or Standard Autobaud)
Connection port (COM port to which the WEBGLIDER is attached)
Phone/Internet Access Number (see list in *Ordering Services* manual)
Account Name (your user name)
Password (your password)

10. You will then be prompted “Do you want to setup Dial-Up-Networking”. Click **NO**. You should have already completed this step (see page 7).
11. The Internet Valet Palette (Tool Bar) and Program Group will be opened.



12. Click the Dial-Up-Network icon on the Internet Valet Palette to start a connection to the internet. If this is your first time using Dial-up Network, you will be taken automatically into **Make New Connection**.



Or, double-click Make New Connection. Type in PSI (or any name) as a new connection, erasing the default “My Connection”. Choose WEBGLIDER from the “Select a Modem” list. Select **NEXT**.

13. Type in the Internet Access Number from PSINet, including area code, then select **NEXT**, then **FINISH**. You will now see the PSINet icon in the Dial-Up Networking program group as shown here.



To Logon to the Internet

1. Double-click the PSI icon you just created. Type in your PSINet Internet user name and password and click the Connect button.
2. Once the WEBGLIDER makes a connection, Dial-Up-Networking will report Connect xxx. **Click NO, if you are asked to log on to Windows 95.**



3. Start your Netscape Browser (or other Internet Valet program) by Clicking the Netscape icon on the Valet toolbar.



4. Now you should proceed to the *Internet Valet Quick Tour* manual, for a tour of the Internet. See the *Internet Valet Easy*

Reference manual that is supplied with the software for additional instructions.

NOTE: If the WEBGLIDER does not connect to the Internet, re-configure Internet Valet, and check all your configuration settings, especially your User Name and Password. *YOU MUST USE YOUR PSINET INTERNET USER NAME AND PASSWORD TO LOG ON TO THE INTERNET.* Remember, your account information is case-sensitive and spelling must be exactly as provided by PSINet.

NOTE: You can re-configure Internet Valet by running Valet Setup once the program is installed.

In the future, to connect to the Internet, open the Internet Valet group, then double-click on the Valet 'V' icon to start the program. Click the Dial-up Network icon from the tool bar, then double-click the PSINet icon to connect to the Internet. After the connection is made, start your Browser (e.g., Netscape) by clicking the Netscape icon on the Internet Valet toolbar.

WINDOWS 3.x Users - Registering with PSINet by Phone

1. Call **1-800-827-7482** (in the U.S.) to sign up for a new Internet account.
2. You will be prompted for information including, but not limited to, the following:
 - current credit card account information
 - connect type: **PPP**
 - PC or Mac: **PC**
 - operating system: **Windows 3.x**
3. Your account will be set up by PSINet and you will be given signon information. This will include your user name and password. Depending on service loads, you may be called back with your account number.

READ THESE 5 NOTES BEFORE INSTALLING INTERNET VALET SOFTWARE:

- 1. Spelling and case (upper/lower) are crucial; type in all information exactly as specified by PSINet.
- 2. During software installation, you will be required to enter account information provided to you by PSINet when you sign up for a new account.
- 3. Make sure the WEBGLIDER configuration software has already been installed. (See the *WEBGLIDER Quick Tour Installation Guide*.)

- 4. Choose **Trumpet Winsock** (if you do not already have Windows socket services installed) during the Internet Valet software installation.
- 5. Choose **PAP** (not PPP) during the software setup so that you will not have to change the login script.

Now, continue with the installation instructions for Valet and Windows 3.x on the next page.

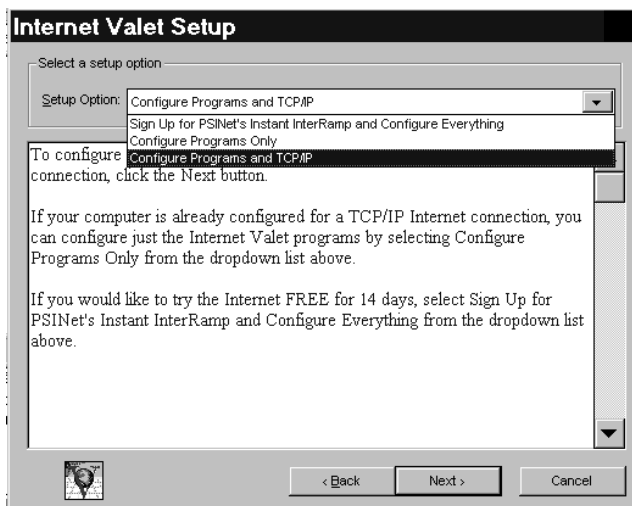
VALET and Windows 3.x

NOTE: If any version of Microphone software is installed on your system, read the SETUP.TXT file on the Internet Valet Disk1 •SETUP before continuing.

1. Insert the Internet Valet Disk1 •SETUP into your floppy drive.
2. Start Windows 3.x select **FILE**, then **RUN** then type **A:SETUP** or **B:SETUP** and click **OK** to begin the Internet Valet Installation. Follow all on-screen directions.
3. Select **CHANGE MODEM**. Choose the **WEBGLIDER** if available, or Standard Autobaud as the modem. Choose the COM port to which the **WEBGLIDER** is attached. Select your time zone. **You MUST install the Winsock if you do not have Windows socket services installed.**

4. Continue with **Internet Valet SETUP** and power on the **WEBGLIDER**. Click **NEXT** to continue.

5. At the Internet Valet Registration and Configuration screen click **NEXT**.



6. In the **SETUP OPTION** menu, use the down arrow to select **CONFIGURE PROGRAMS** and **TCP/IP** and click **NEXT**.

7. Fill in the Personal Information and click **NEXT**. If this screen has fields for **CREDIT CARD** information, you have selected the wrong Setup Option. Click **BACK** and choose **CONFIGURE PROGRAMS and TCP/IP**. When you register Internet Valet, you are eligible for free Technical Support from Software Ventures.

8. Fill in the **ACCOUNT INFORMATION** screen, with the information provided to you when you signed up with PSINet. Click **NEXT** to continue. Below are definitions for information you will be entering:

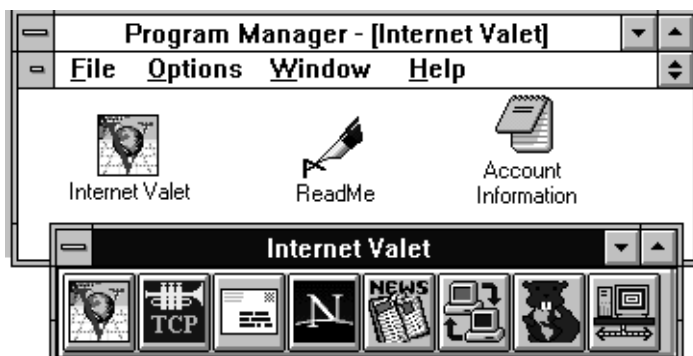
User Name/POP Login/Account Name (your user name)
Password/Account Password/Authentication (your password)
Email Address (your username @interramp.com)
SMTP Server (smtp.interramp.com)
POP3 Server (pop3.interramp.com)
NNTP Server (usenet.interramp.com)

(NOTE: 'InterRamp' has two R's)

9. Fill in additional account information required (as shown below), then click **CONFIGURE** to finish configuring Internet Valet.

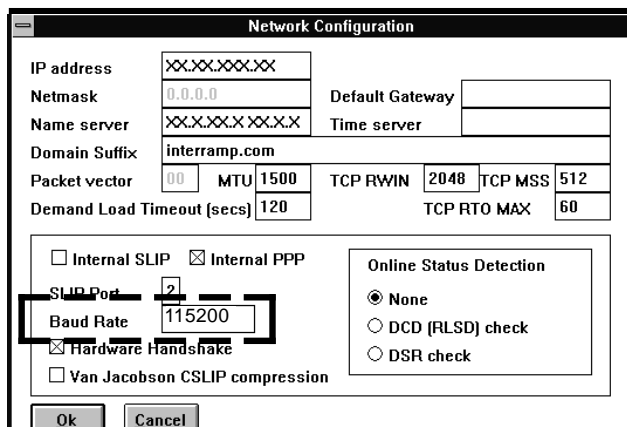
IP Address (leave blank)
Protocol (PAP)
Subnet Mask (leave blank)
Gateway IP (supplied by PSINet)
Domain Name (interramp.com)
DNS IP (supplied by PSINet)
Modem (WEBGLIDER or Standard Autobaud)
Connection port (COM port to which the WEBGLIDER is attached)
Phone/Internet Access Number (see list in *Ordering Services* manual)
Account Name (your user name)
Password (your password)

10. The Internet Valet Palette (Tool Bar) and Program Group will be open.



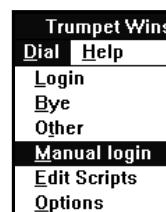
a. Start (click) the TCP icon. Then double-click the Trumpet Winsock icon to show call progress.

b. Select **FILE**, then **SETUP**, then type in a baud rate of 115200. Click OK to finish (you may need to restart



Trumpet Winsock; then repeat step a.).

c. Select **Dial**, then **Manual Login**, and type AT (press ENTER) until you get an OK response.

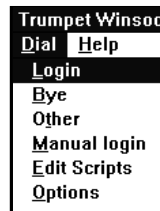


- d. After receiving an **OK**, type **AT &Q3 &C1 &D2** (press ENTER), then the **ESC** key to return to normal processing.
- **AT&Q3** sets the WEBGLIDER to PPP mode (required for PSINet).
 - **AT&Q0** sets the WEBGLIDER to V.120 mode (required for CompuServe).

To logon to the Internet

1. Select **Dial**, then **Login**.

2. Then double-click the Trumpet Winsock icon to show call progress. You will receive the messages “**Connect xxxx**”, followed by “**PPP Enabled**”, then the “**IP Address**” when a successful connection is made.



3. Minimize the Trumpet Winsock.

4. **DO NOT close Trumpet Winsock until you are ready to log off the Internet.** (To close Trumpet Winsock, select **FILE**, then **EXIT**, then press **ESC**).

5. Start your Netscape Browser (or other Internet Valet program) by Clicking the Netscape icon on the Valet toolbar.



6. Now you should proceed to the *Internet Valet Quick Tour* manual, for a tour of the Internet. See the *Internet Valet Easy Reference* manual that is supplied with the software for additional instructions.

NOTE: If the WEBGLIDER does not connect to the Internet, re-configure Internet Valet, and check all your configuration settings, especially your User Name and Password. YOU MUST USE YOUR PSINET INTERNET USER NAME AND PASSWORD TO LOG ON TO THE INTERNET. Remember, your account information is case-sensitive and spelling must be exactly as provided by PSINet.

NOTE: You can re-configure Internet Valet by running Valet Setup once the program is installed.

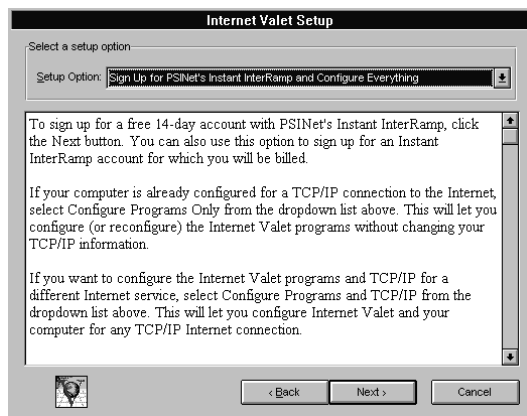
In the future, to connect to the Internet, open the Internet Valet group, then double-click on the Valet 'V' icon to start the program. Click the TCP icon from the tool bar. After the connection is made, start your Browser (e.g., Netscape) by clicking the Netscape icon on the Internet Valet toolbar.

IF YOU ARE REGISTERING WITH PSINET WITH AN ANALOG MODEM

VALET and Windows 95

NOTE: If any version of Microphone software is installed on your system, read the SETUP.TXT file on the Internet Valet Disk1 •SETUP before continuing.

1. Insert the Internet Valet Disk1 •SETUP into your floppy drive.
2. Start Windows 95 click **START** then **RUN** then type **A:SETUP** or **B:SETUP** and click **OK** to begin the Internet Valet Installation. Follow all on-screen directions.
3. Select **CHANGE MODEM**. Choose the **WEBGLIDER** if available, or **Standard Autobaud** as the modem. Choose the **COM** port to which the **WEBGLIDER** is attached. Select your time zone. **Do not install the Winsock.**
4. Continue with **Internet Valet SETUP** and power on the **WEBGLIDER**. Click **NEXT** to continue.
5. At the Internet Valet Registration and Configuration screen click **NEXT**.
6. In the **SETUP OPTION** menu, use the down arrow to select **SIGNUP for PSINet's Instant InterRamp, configure everything**, and click **NEXT**.



7. Fill in the Personal Information and Credit Card information. Click Register (read all on-screen information). Choose a registration payment plan

The screenshot shows a registration window titled "PSINet Instant InterRamp - Personal Information". It is labeled "1 of 1". The form is divided into two main sections: "Registration Information" and "Credit Card Information".

Registration Information:

- Name:** Three input fields for First, M.I., and Last.
- Organization:** One input field.
- Address:** Three stacked input fields.
- City:** One input field.
- State:** A dropdown menu.
- ZIP:** One input field.
- Telephone:** One input field.
- FAX:** One input field.
- Country:** A dropdown menu with "US" selected.

Credit Card Information:

- Card Type:** Radio buttons for Visa (selected), MasterCard, Discover, and American Express.
- Card Number:** One input field.
- Expiration:** One input field.

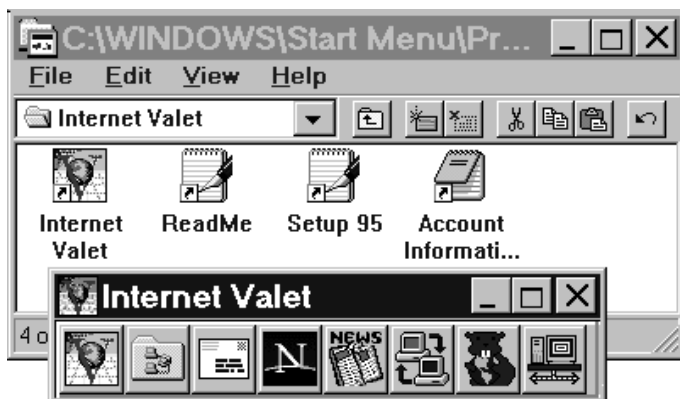
At the bottom of the registration section are two buttons: "Modem Setup" and "More Information". At the bottom of the credit card section are three buttons: "< Back", "Register", and "Cancel". A small globe icon is located at the bottom left of the window.

or choose free demo and click **CONTINUE**. When you register Internet Valet, you are eligible for free Technical Support from Software Ventures.

8. When signup is complete, you will be prompted with all account information that you will need to connect to the Internet through PSINet.
9. Choose a local phone number and click **CONTINUE**. Setup will then configure all the programs included in Internet Valet. You will also be prompted with your new PSINet Internet account name and password.
10. **WRITE DOWN ALL THE ACCOUNT INFORMATION EXACTLY AS SHOWN.**

To logon to the Internet

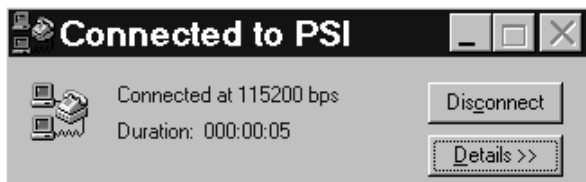
1. The Internet Valet Palette (Tool Bar) and Program Group will be open.



2. Click the Dial-Up-Network icon on the Internet Valet Palette to start a connection to the internet. Double-Click the PSI icon you created on pages 12-13. Click the connect button.



3. Once the WEBGLIDER makes a connection, Dial-Up-Networking will report Connect xxx. **Click NO, if you are asked to log on to Windows 95.**



4. Start your Netscape Browser (or other Internet Valet program) by Clicking the Netscape icon on the Valet toolbar. See the *Internet Valet Easy Reference* manual that is supplied with the software.



5. Now you should proceed to the *Internet Valet Quick Tour manual* for a tour of the Internet.

NOTE: If the WEBGLIDER does not connect to the Internet, re-configure Internet Valet, and check all your configuration settings, especially your User Name and Password. YOU MUST USE YOUR PSINET INTERNET USER NAME AND PASSWORD TO LOG ON TO THE INTERNET. Remember, your account information is case-sensitive and spelling must be exactly as provided by PSINet.

NOTE: You can re-configure Internet Valet by running Valet Setup once the program is installed.

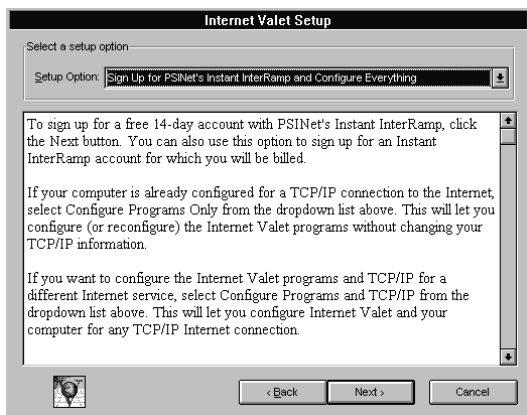
In the future, to connect to the Internet, open the Internet Valet group, then double-click on the Valet 'V' icon to start the program. Click the Dial-up Network icon from the tool bar, then double-click the PSINet icon to connect to the Internet. After the connection is made, start your Browser (e.g., Netscape) by clicking the Netscape icon on the Internet Valet toolbar.

VALET and Windows 3.x

VALET and Windows 3.x

NOTE: If any version of Microphone software is installed on your system, read the SETUP.TXT file on the Internet Valet Disk1 •SETUP before continuing.

1. Insert the Internet Valet Disk1 •SETUP into your floppy drive.
2. Start Windows 3.x select **FILE**, then **RUN** then type **A:SETUP** or **B:SETUP** and click **OK** to begin the Internet Valet Installation. Follow all on-screen directions.
3. Select **CHANGE MODEM**. Choose the **WEBGLIDER** if available, or Standard Autobaud as the modem. Choose the COM port to which the **WEBGLIDER** is attached. Select your time zone. **You MUST install the Winsock if you do not have Windows socket services installed.**
4. Continue with **Internet Valet SETUP** and power on the **WEBGLIDER**. Click **NEXT** to continue.
5. At the Internet Valet Registration and Configuration screen click **NEXT**.
6. In the **SETUP OPTION** menu, use the down arrow to select **SIGNUP for PSINet's Instant InterRamp**, configure everything, and click **NEXT**.



7. Fill in the Personal Information and Credit Card information. Click Register (read all on-screen information). Choose a registration payment plan or

PSINet Instant InterRamp - Personal Information

1 of 1

Registration Information

Name:
 First M.I. Last

Organization:

Address:

City: State: ZIP:

Telephone: FAX:

Country:

Modem Setup More Information

Credit Card Information

Card Type

Visa
 MasterCard
 Discover
 American Express

Card Number:

Expiration:

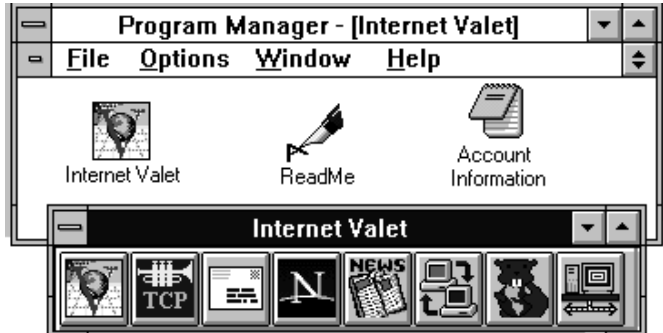
< Back Register Cancel

choose free demo and click **CONTINUE** When you register Internet Valet, you are eligible for free Technical Support from Software Ventures.

8. When signup is complete, you will be prompted with all account information that you will need to connect to the Internet through PSINet.
9. Choose a local phone number and click CONTINUE. Setup will then configure all the programs included in Internet Valet. You will also be prompted with your new PSINet Internet account name and password.
10. **WRITE DOWN ALL THE ACCOUNT INFORMATION EXACTLY AS SHOWN.**

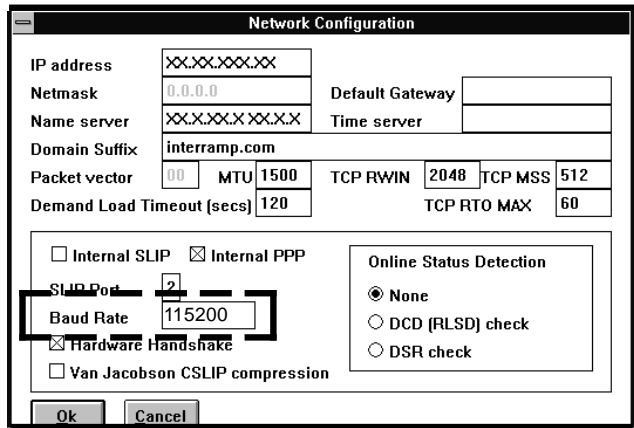
11. The Internet Valet Palette (Tool Bar) and Program Group will be open.

- a. Start (click) the TCP icon. Then double-click the Trumpet Winsock icon to show call progress.



- b. Select **FILE**, then **SETUP**, then type in a baud rate of 115200.

Click OK to finish (you may need to restart Trumpet Winsock; then repeat step a.).



- c. Select **Dial**, then **Manual Login**, and type AT (press ENTER) until you get an OK response.

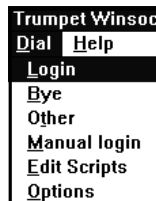


d. After receiving an **OK**, type **AT &Q3 &C1 &D2** (press **ENTER**), then the **ESC** key to return to normal processing.

- **AT&Q3** sets the WEBGLIDER to PPP mode (required for PSINet).
- **AT&Q0** sets the WEBGLIDER to V.120 mode (required for CompuServe).

To Logon to the Internet

1. Select **Dial**, then **Login**.



2. Then double-click the Trumpet Winsock icon to show call progress. You will receive the messages “**Connect xxxx**”, followed by “**PPP Enabled**”, then the “**IP Address**” when a successful connection is made.

3. Minimize the Trumpet Winsock.

4. **DO NOT close Trumpet Winsock until you are ready to log off the Internet.** (To close Trumpet Winsock, select **FILE**, then **EXIT**, then press **ESC**).

5. Start your Netscape Browser (or other Internet Valet program) by Clicking the Netscape icon on the Valet toolbar.



NOTE: If the WEBGLIDER does not connect to the Internet, re-configure Internet Valet, and check all your configuration settings, especially your User Name and Password. *YOU MUST USE YOUR PSINET INTERNET USER NAME AND PASSWORD TO LOG ON TO THE INTERNET.* Remember, your account information is case-sensitive and spelling must be exactly as provided by PSINet.

NOTE: You can re-configure Internet Valet by running Valet Setup once the program is installed.

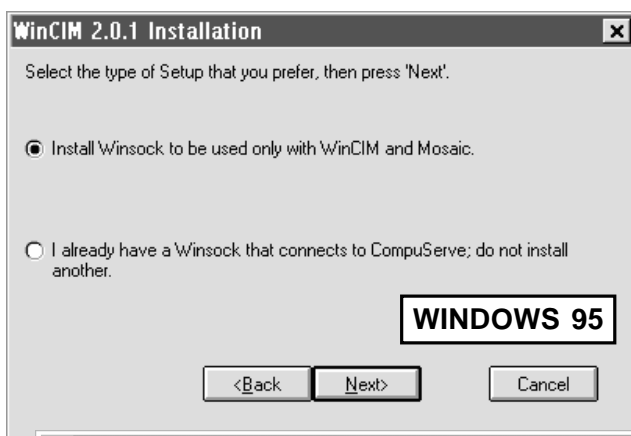
In the future, to connect to the Internet, open the Internet Valet group, then double-click on the Valet 'V' icon to start the program. Click the TCP icon from the tool bar. After the connection is made, start your Browser (e.g., Netscape) by clicking the Netscape icon on the Internet Valet toolbar.

Registering with CompuServe®

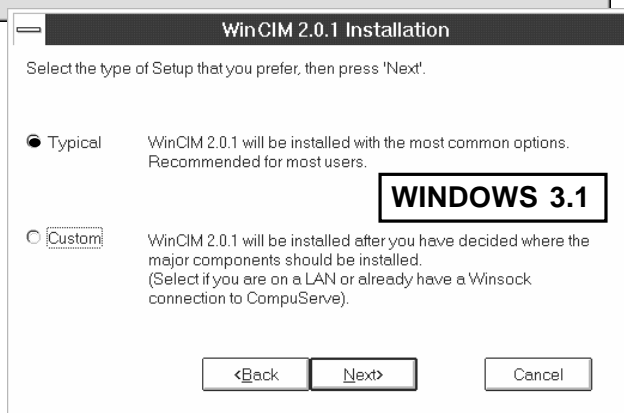
If you are signing up with a *new* account...

1. Insert diskette 1 of 2 for CompuServe setup into your floppy drive (A: or B:). Run **Setup** from Program Manager (Windows 3.1) or **Run** from the **Startup menu** (Windows 95) Screens for Windows 95 and Windows 3.1 may vary slightly.
2. You are presented with an introductory screen including software licensing terms and other information. Select **Next** when ready.

3. You will be asked if you already have a Winsock installed. For Internet access, a Winsock installation is required. For Internet access through CompuServe, select **Install Winsock**, then select **Next**.



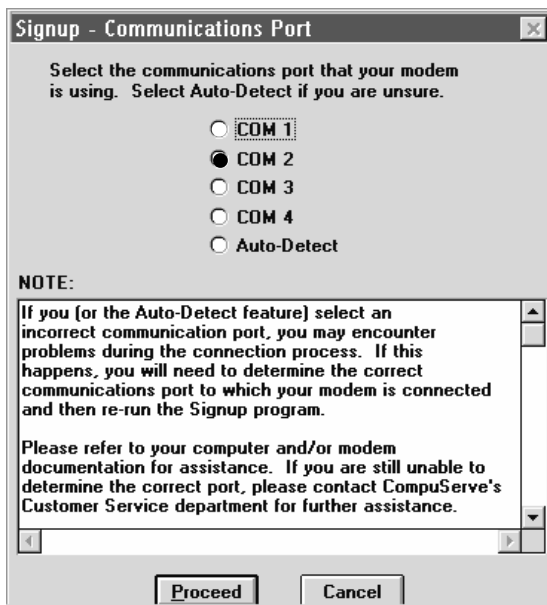
4. WinCIM will be installed into the destination directory automatically. To change the directory, select



Browse. If you are already a CompuServe member, uncheck the **Install Signup** box. Select **Next** to continue. Files are then copied to the specified directory on your hard drive.

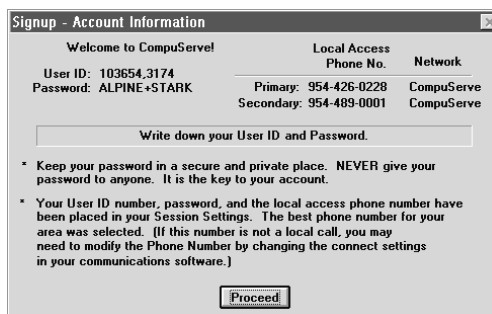
5. Next, you are prompted for the second installation diskette. A Program Group and icons are generated. First-time members will be prompted to sign up. Select **Yes**.
6. After reading the signup information, select **Proceed**, then:
 - a. **ISDN SIGNON:** select **Connect Settings**, then set **Baud Rate** to 57600bps. Then set **Connector** to the COM port to which the WEBGLIDER is attached. Change the **Access Number** to **1-800-473-6282**. Select **Modem**, then select WEBGLIDER (if available) or Hayes-compatible from **Modem List**. Set the **Initialize** field to **AT &Q0 &C1 &D2 ^M**. Select **OK** twice, then select **Sign Me Up** and continue with step 7. **NOTE: Select Use Current (1-800-473-6282) Access Number when prompted.**
 - b. **ANALOG SIGNON:** select **Sign Me Up** to continue, or select other options for more information.
7. You are then asked for: Agreement Number, Resident Country, Payment method, Account Usage, and Serial Number. The agreement number and serial number can be found on the WinCIM envelope. Select **Proceed** when ready.
8. Next, you are asked for various personal data. Continue selecting **Proceed**. You are then presented with service agreement terms. When you are satisfied, proceed.

9. Specify Phone Dial Type, then select Proceed. Then specify the communications port, then OK. Now, select Sign Me Up and Baud Rate. Finally, select **Sign Up** to connect to CompuServe through your modem.



At the end of the signup process, you will receive a confirmation screen with an account number and password. CompuServe installation is now complete. A few CompuServe ISDN access numbers are as follows:

1-714-261-0583 (CA)
1-415-982-0401 (CA)
1-614-717-9700 (OH)
1-214-953-1152 (TX)
1-713-718-9541 (TX)



Select **GO Membership Services** when you are logged into CompuServe for a complete up-to-date list of CompuServe ISDN access numbers. Any number listed with V.120 as the protocol is an ISDN access number.

If you have an *existing* CompuServe account...

Make the following changes in order to use the WEBGLIDER for ISDN access:

1. Start WinCIM. Change your Access Phone Number to one that supports ISDN. A few CompuServe ISDN access numbers are as follows:

1-714-261-0583 (CA)

1-415-982-0401 (CA)

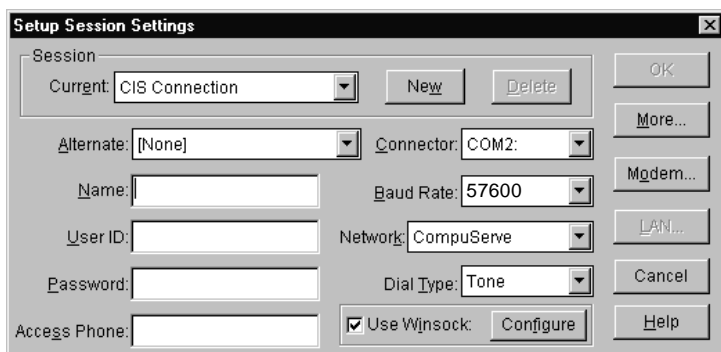
1-614-717-9700 (OH)

1-214-953-1152 (TX)

1-713-718-9541 (TX)

Select **GO Membership Services** when you are logged into CompuServe for a complete up-to-date list of CompuServe ISDN access numbers. Any number listed with V.120 as the protocol is an ISDN access number.

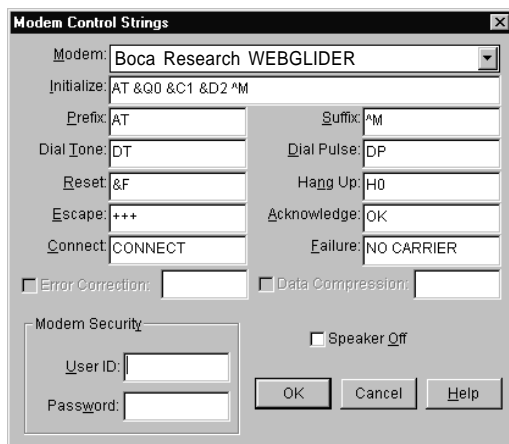
2. Select **SPECIAL**, then **SESSION SETTINGS**. Set the baud rate to 57.6Kbps.



4. Then select **MODEM** from the Session Settings screen.

5. Choose the **WEBGLIDER** from the Modem list or a standard Hayes-compatible modem.

6. Set the modem initialization string to: **AT &Q0 &C1 &D2 ^M** and click OK twice to finish.





Start your operating system as you normally would.

WINDOWS 95: Select **START**, then **RUN** and type **A:SETUP** (or **B:SETUP**).

WINDOWS 3.X: Select **FILE**, then **RUN** and type **A:SETUP** (or **B:SETUP**).

NOTE: If ProShare is provided on CD-ROM, the path will change from **A:SETUP** (**B:SETUP**) to **D:\PROSHARE\DISK1\SETUP**.

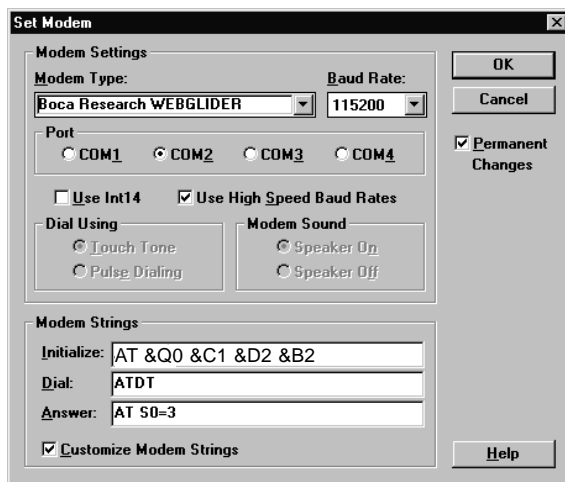
After files are copied, start ProShare. Click **CONFERENCE**, then **SETUP**.

1. Check the **MODEM** box, then click **SET MODEM**.

2. Choose the **WEBGLIDER** (or **Hayes-compatible**) from the **MODEM TYPE** list.

3. Check the **USE HIGH-SPEED**

BAUD RATES box and then set the baud rate to 115200bps.



4. Make sure the **PORT** selected is the COM port to which the WEBGLIDER is attached (typically COM2 as shown in our earlier examples).
5. Check the **CUSTOMIZE MODEM STRINGS** box, then set **INITIALIZE:** to **AT &Q0 &C1 &D2**. Click **OK** twice to finish.

NOTE: For detailed operating instructions, see Intel ProShare's on-line documentation which is generated in the ProShare program group when the software is installed. Remember: to use ProShare, you and the person you are calling must both have ProShare installed.

Copyright

©1996. Boca Research, Inc. All rights reserved. No reproduction of this document in any form is allowed without permission in writing from Boca Research, Inc. Boca Research is not liable for any damage resulting from technical or editorial errors or omissions contained in this document. The information in this manual is subject to change without notice. Revisions to the product(s) in this manual may occur at any time without notice.

Trademarks

All Boca Research products are trademarks of Boca Research, Inc. All other references to computer systems, software, and peripherals use trademarks owned by their respective manufacturers.

Publication Date: May, 1996
Printed in the U.S.A.

TU120AES.PM5



Part No. 9497
Rev. 1.0