



SV-HBA3132

**PCI-Express to SATA II (3Gbps)
Host Bus Adapter**

User's Guide



Version 1.1
Document Number: MAN-003132-000

Copyright © 2006, Silicon Image, Inc.

All rights reserved. No part of this publication may be reproduced, transmitted, transcribed, or translated into any language or computer format, in any form or by any means without prior written permission of:

Silicon Image, Inc.
1060 East Arques Ave.
Sunnyvale CA 94085

Silicon Image, Inc. reserves the right to make changes to the product(s) or specifications to improve performance, reliability, or manufacturability. Information furnished is believed to be accurate and reliable, but Silicon Image, Inc. shall not be responsible for any errors that may appear in this document. Silicon Image, Inc. makes no commitment to update or keep current the information contained in this document. However, no responsibility is assumed for its use; nor any infringement of patents or other rights of third parties which may result from its use. No liability is assumed as a result of their use or application. No rights under any patent accompany the sale of any such product(s) or information.

Silicon Image, Inc. products are not designed or intended for use in Life Support Systems. A Life Support System is a product or system intended to support or sustain life, which if it fails, can be reasonably expected to result in significant personal injury or death. If Buyer or any of its direct or indirect customers applies any product purchased or licensed from Silicon Image, Inc. to any such unauthorized use, Buyer shall indemnify and hold Silicon Image, Inc., its affiliates and their respective suppliers, harmless against all claims, costs, damages and expenses arising directly or indirectly, out of any such unintended or unauthorized use, even if such claims alleges that Silicon Image, Inc. or any other person or entity was negligent in designing or manufacturing the product.

Specifications are subject to change without notice.

Contents

1	Getting Started	1
	Package Contents	1
	System Requirements	1
	References	1
	SV-HBA3132 Specifications	2
2	Installing the SV-HBA3132	3
	Install the SV-HBA3132 Card	3
	Install the Disk Drives/Devices	4
	Install External Devices on the SV-HBA3132	4
	Install the Driver	5
	Microsoft Windows 2003 Server and Windows XP	5
	To complete the driver installation	5
	To confirm the driver installation	6
	Microsoft Windows 2000	7
	To complete the driver installation	7
	To confirm the driver installation	10
	Mac OS X Installation	11
	To complete the driver installation	11
	To confirm the driver installation	14
	Regulatory Compliance Statements	15
	Federal Communications Commission Radio Frequency Interference Statement	15
	European Union Compliance Statement	16
	ICES-003 (Canadian) Compliance Statement	16
	VCCI (Japan) Compliance Statement	16

1 Getting Started

This Installation Guide describes how to install the Silicon Image SV-HBA3132 host bus adapter, Serial ATA (SATA) devices, and device drivers.

Package Contents

Your SV-HBA3132 Serial ATA Host Bus Adapter includes:

- SV-HBA3132 PCI-Express to Serial ATA Host Bus Adapter
- CD-ROM which includes drivers and documentation
- Quick Installation Guide

System Requirements

- Processor Type:
 - ✓ Intel Pentium, Celeron, or Xeon system (or equivalent AMD Opteron or Athlon system) for Windows systems
 - ✓ G5 for Macintosh systems
- Operating System
 - ✓ Windows 2000 with Service Pack 4 (or later)
 - ✓ Windows XP with Service Pack 2 (or later)
 - ✓ Windows 2003 with Service Pack 1 (or later)
 - ✓ Mac OS 10.4.x (or later)
- An available PCI-Express compliant slot
- An available SATA device
- CD-ROM or DVD-ROM drive

References

- PCI Local Bus Specification Revision 2.3
- PCI-Express Specification Revision 1.1
- Serial ATA / High Speed Serialized AT Attachment specification, Revision 1.0a
- Serial ATA II/ Extensions to Serial ATA 1.0, Revision 1.0

SV-HBA3132 Specifications

Figure 1 SV-HBA3132



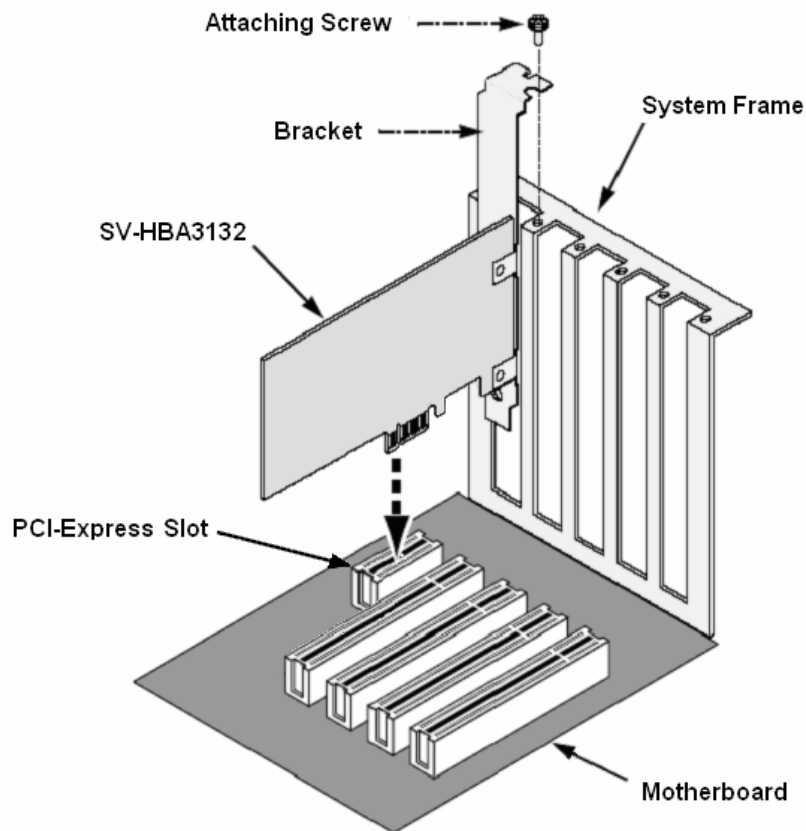
Specification	Description
Ports	Two external SATA ports capable of running 3Gbps to SATA hard disk drives or Port Multiplier devices.
SATA Connectors	Two SATA external (type C) connectors.
Power	+3.3V +/- 9%, 0.6A (max) from the PCI-Express connector
Form Factor	PCI-Express x1 low profile form factor.
Dimensions	4.5" x 2.5" (11.4 cm x 6.4 cm)
Temperature	Operating: 0 to 55 degrees C (32 to 131 degrees Fahrenheit) Non-Operating: -40 to 65 degrees C (-40 to 149 degrees Fahrenheit) Temperature Gradient: 10 degrees C per hour
Relative Humidity	Operating: 5% to 80%, non-condensing Non-Operating: 5% to 95%, non-condensing

2 Installing the SV-HBA3132

Install the SV-HBA3132 Card

The SV-HBA3132 Serial ATA card fits into any available PCI-Express slot on your PC or Server motherboard (see [Figure 2](#)).

Figure 2 PCI-Express slot on motherboard



1. Turn off your system.
2. Remove the cover of your system.
3. Remove the inside slot cover of an available PCI-Express slot on the motherboard.
4. Install the SV-HBA card into the open PCI-Express slot. Secure the bracket to the system's frame.
5. Replace the cover of your system.

Install the Disk Drives/Devices

The SV-HBA3132 card supports up to two external Serial ATA devices. For optimal performance, install Serial ATA drives of the same model and capacity. The drives' matched performance allows the logical disk to function better as a single drive.

Install External Devices on the SV-HBA3132

1. Attach one Serial ATA data cable to each Serial ATA device (for example, an SV1000 or SV2000).
2. Then attach the other ends of the cables to the external connectors on the SV-HBA3132 card.
3. Power on the external SATA device.
4. Boot up the system.

Install the Driver

The procedures in this section assume that the Windows or Macintosh operating system has already been installed on your PC or Server.

Microsoft Windows 2003 Server and Windows XP

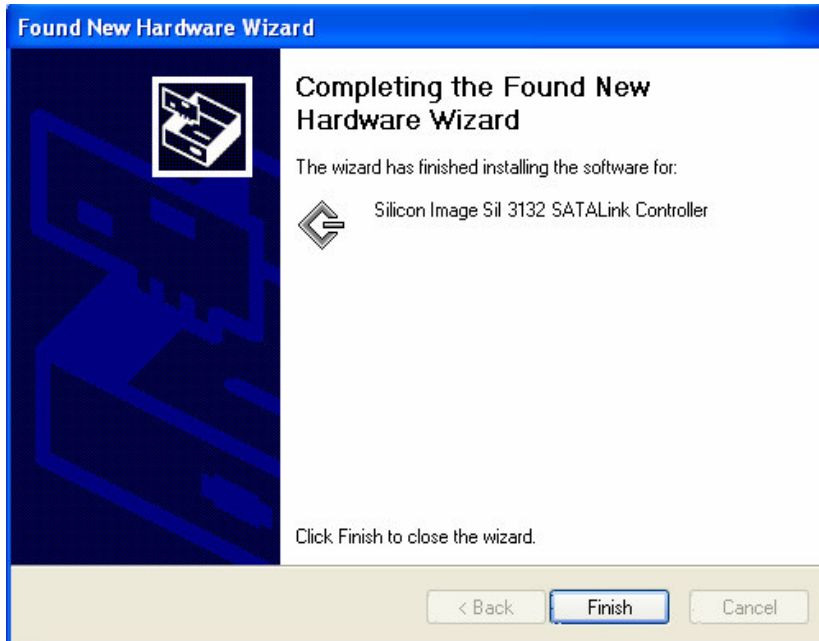
After you install the SV-HBA3132 and external devices, and then power on your computer, the **Found New Hardware Wizard** opens.



To complete the driver installation

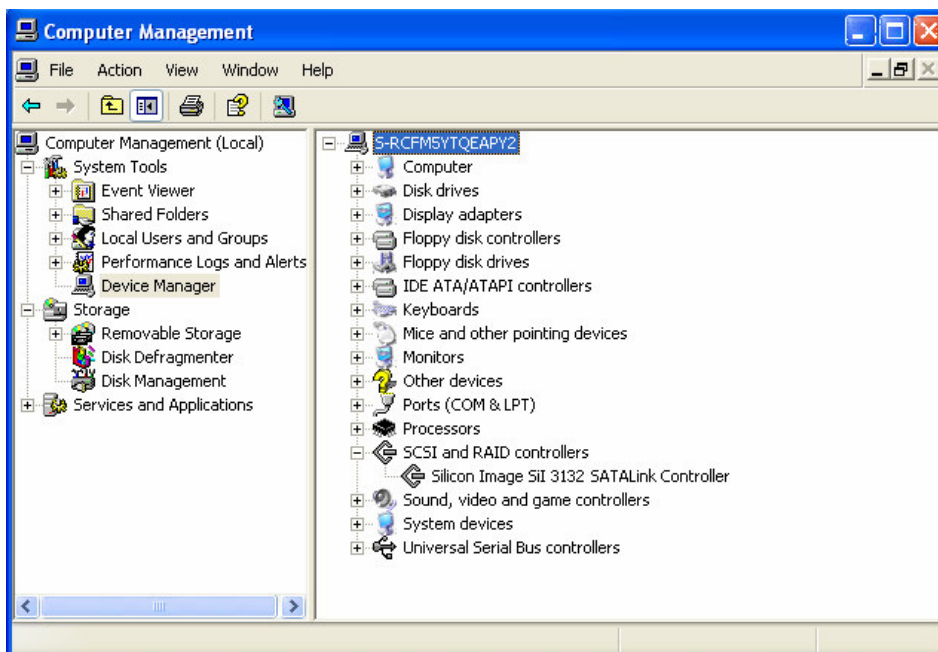
1. Insert the SV-HBA3132 CD-ROM.
2. Select **Install the software automatically (Recommended)** and click **Next**.

3. When installation is complete, click **Finish**.



To confirm the driver installation

1. Right-click the **My Computer** icon on your desktop and choose **Manage** from the pop-up menu.
2. Double-click **Device Manager**.
3. Double-click **SCSI and RAID controllers**.
4. Verify that the Silicon Image SiI 3132 SATALink Controller appears, as shown here.



Microsoft Windows 2000

After you install the SV-HBA3132 and devices, power on your computer. The **Found New Hardware Wizard** opens.

To complete the driver installation

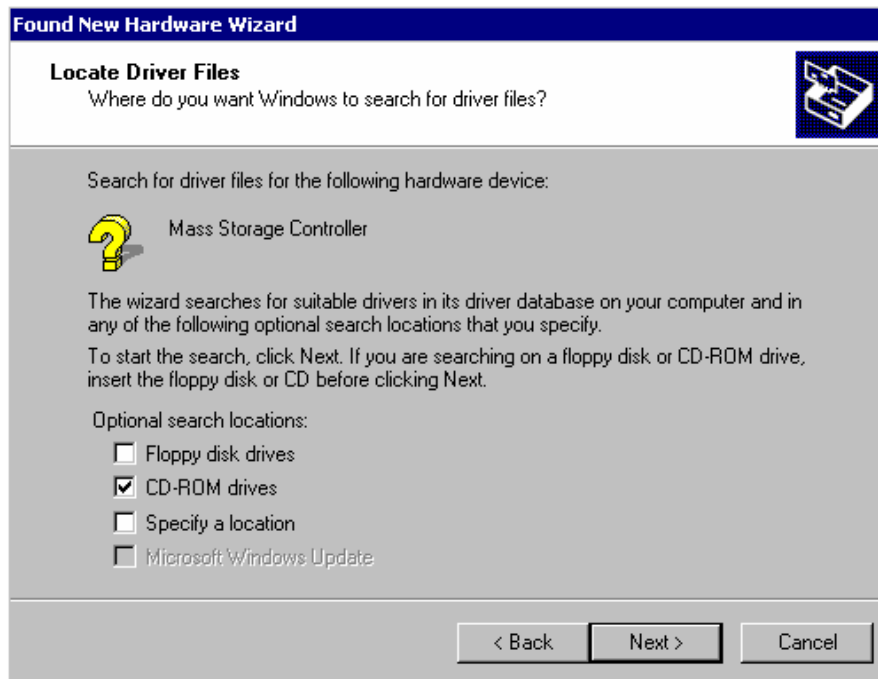
1. Insert the SV-HBA3132 CD-ROM and click **Next**.



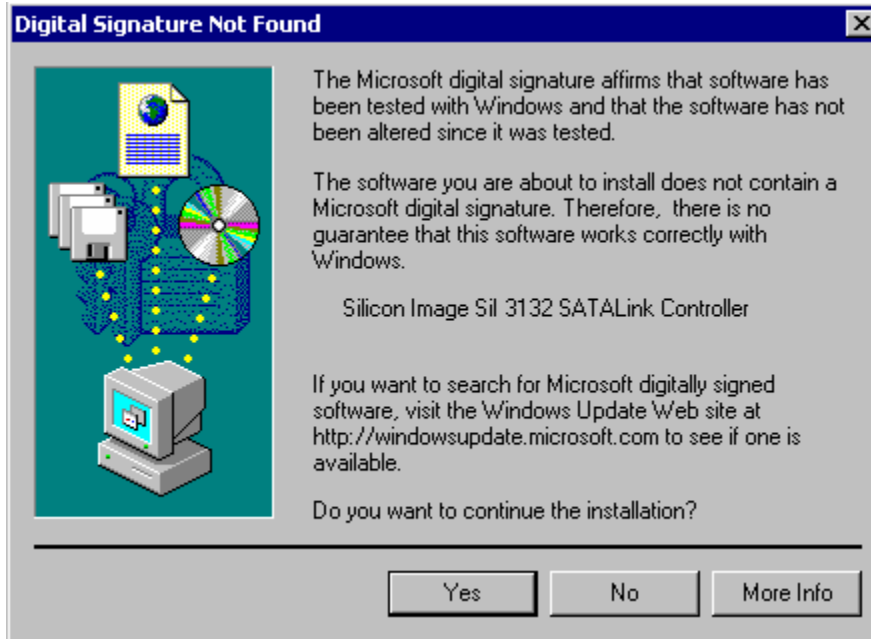
2. Select **Search for a suitable driver for my device (recommended)** and click **Next**.



3. Select **CD-ROM drives** and click **Next**.



4. Click **Next** once if the driver is found.
5. If you get the **Digital Signature Not Found** message, click **Yes** to continue installation.

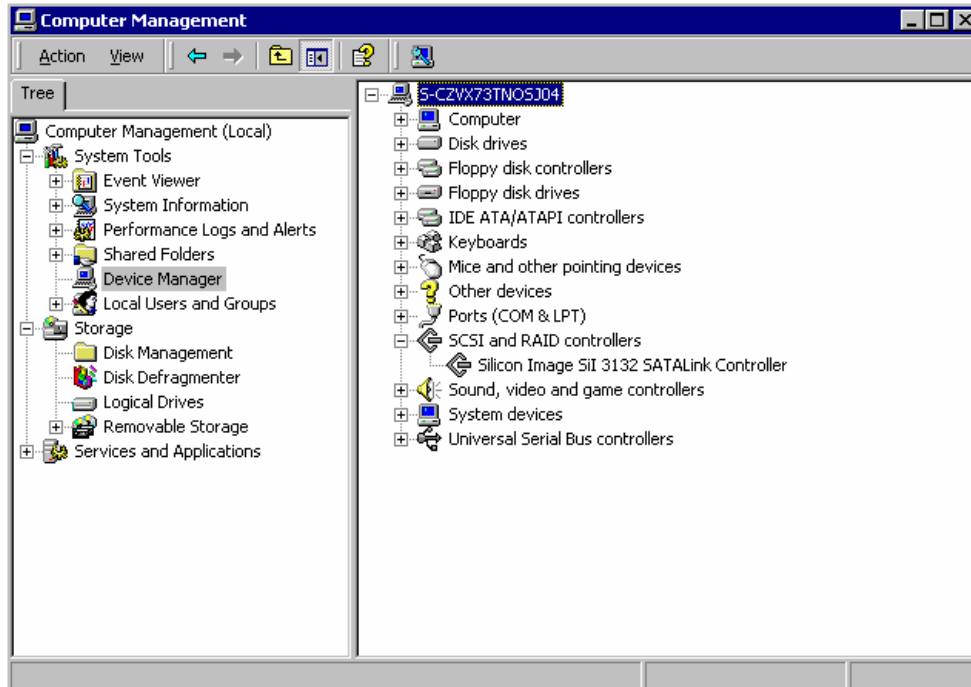


6. When the installation is complete, click **Finish** and reboot the system.



To confirm the driver installation

1. Right-click the **My Computer** icon on your desktop and choose **Manage** from the pop-up menu.
2. Double-click **Device Manager**.
3. Double-click **SCSI and RAID controllers**.
4. Verify that the Silicon Image SiI 3132 SATALink Controller appears, as shown here.

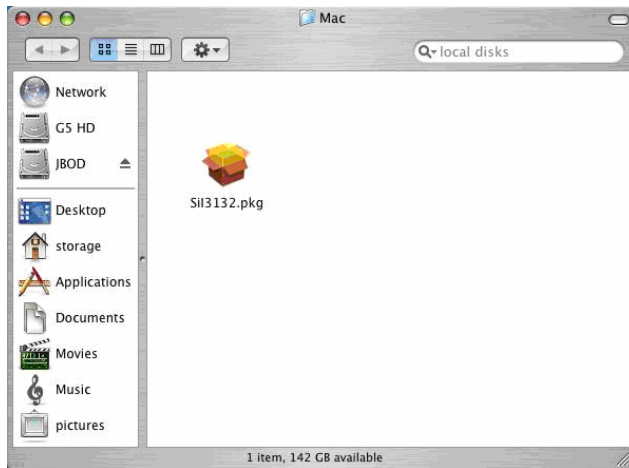


Mac OS X Installation

After you install the SV-HBA3132, power on your computer.

To complete the driver installation

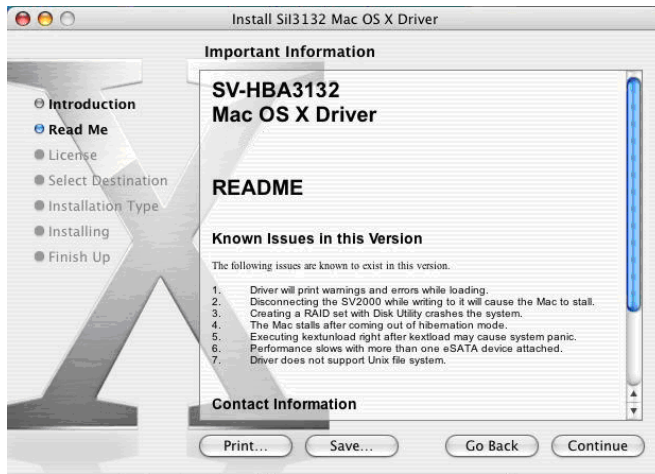
1. Insert the SV-HBA3132 CD-ROM.
2. Open the Mac folder and click the **Sii3132.pkg** installer.



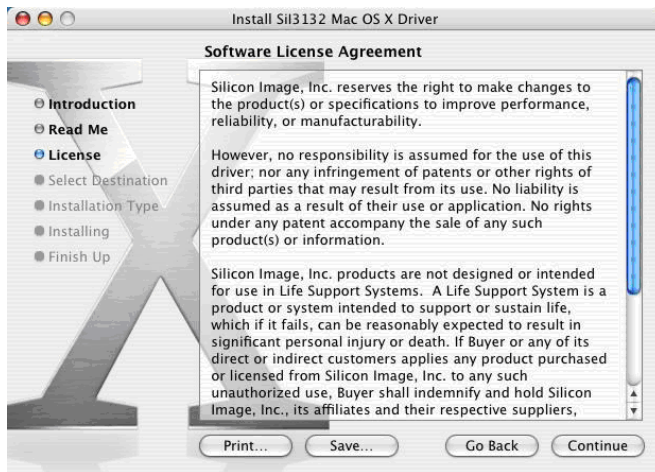
3. Click **Continue**.



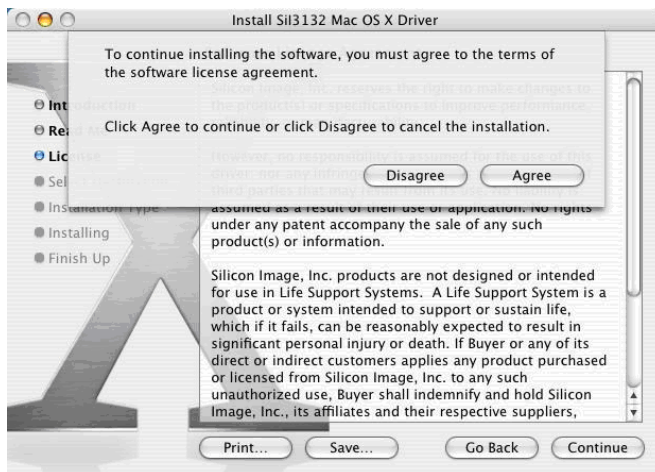
- 4. Review the provided Read Me. Click **Continue**.



- 5. Review the License agreement. Click **Continue**.



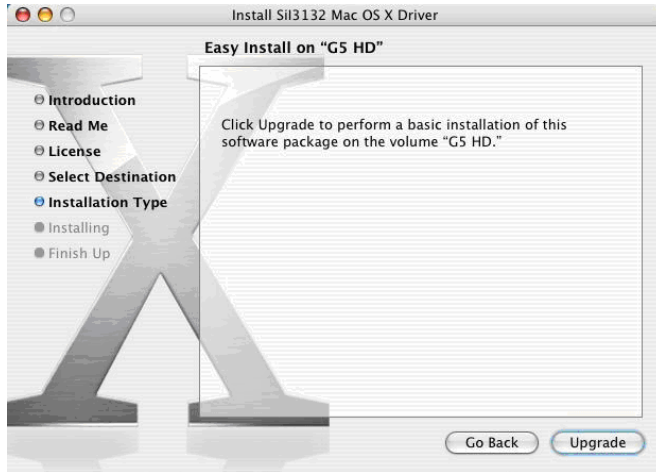
- 6. Click **Agree** to accept the terms of the License agreement and proceed with the installation.



7. Select the system hard disk drive.



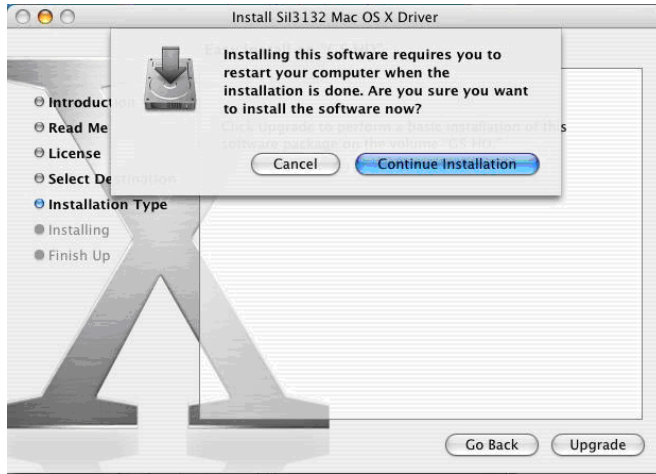
8. Click **Upgrade** to install the driver.



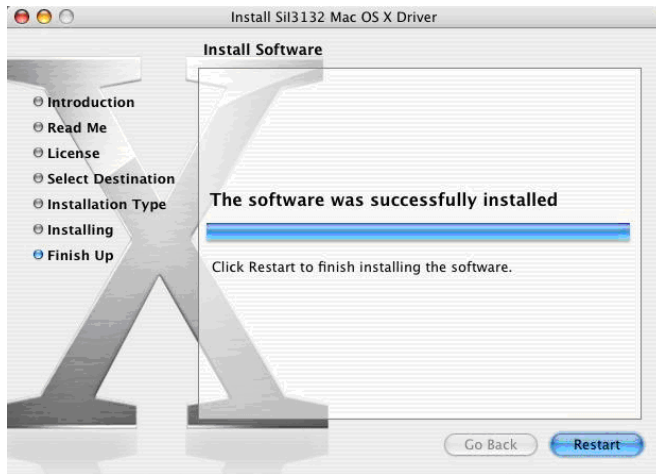
9. Enter the username and password for the root account. Click **OK**.



10. Click **Continue Installation** to acknowledge the restart warning.



11. Click **Restart** to reboot the computer and complete the installation.



To confirm the driver installation

In case of a driver installation failure, an error message will appear after you reboot the computer. Follow the recommendations in the error message.

Regulatory Compliance Statements

Federal Communications Commission Radio Frequency Interference Statement

This equipment has been tested and found to comply with the limits for a Class B digital device, pursuant to Part 15 of the FCC rules. These limits are designed to provide reasonable protection against harmful interference in a residential installation. This equipment generates, uses and can radiate radio frequency energy and, if not installed and used in accordance with the instructions, may cause harmful interference to radio communications. However, there is no guarantee that interference will not occur in a particular installation. If this equipment does cause harmful interference to radio or television reception, which can be determined by turning the equipment off and on, the user is encouraged to try to correct the interference by one or more of the following measures:

- Reorient or relocate the receiving antenna.
- Increase the separation between the equipment and the receiver.
- Connect the equipment into an outlet on a circuit different from that to which the receiver is connected.
- Consult the dealer or an experienced radio/TV technician for help.

You may also find helpful the following booklet, prepared by the FCC: "How to Identify and Resolve Radio-TV Interference Problems." This booklet is available from the U.S. Government Printing Office, Washington D.C. 20402.

Changes and Modifications not expressly approved by the manufacturer or registrant of this equipment can void your authority to operate this equipment under Federal Communications Commissions or Industry Canada regulations.

In order to maintain compliance with FCC regulations shielded cables must be used with this equipment. Operation with non-approved equipment or unshielded cables is likely to result in interference to radio and television reception.



European Union Compliance Statement

Directives to which conformity is declared:

- EMC Directives 89/336/EEC

Standards to which conformity is declared:

- EN55022: 1998 +A1+A2:2003
- EN55024: 1998+A2:2003
- EN61000-3-2: 2000
- EN61000-3-3: 2001

ICES-003 (Canadian) Compliance Statement

This Class B digital apparatus complies with Canadian ICES-003.

Cet appareil numérique de la classe B est conforme à la norme NMB-003 du Canada.

VCCI (Japan) Compliance Statement

This is a Class B product based on the standard of the Voluntary Control Council for Interference from Information Technology Equipment (VCCI). If this is used near a radio or television receiver in a domestic environment, it may cause radio interference. Install and use the equipment according to the instruction manual.

警告

VCCI準拠クラスB機器（日本）

この機器は、Information Technology EquipmentのVoluntary Control Council for Interference (VCCI)の規格に準拠したクラスB製品です。この機器をラジオやテレビ受信機の近くで使用した場合、混信が発生する恐れがあります。本機器の設置および使用に際しては、取扱説明書に従ってください。