

# COMFAST®

## 150M Mini Wireless Router

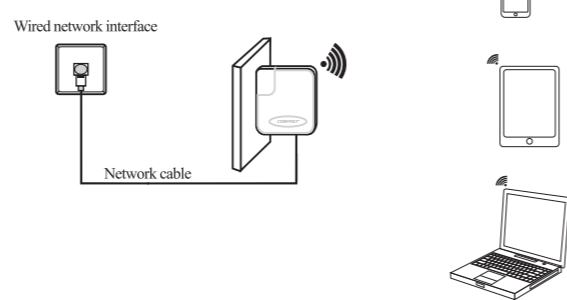
### Quick Installation Guide

CF-WR6000N

### Chapter 1 Product Introduction

Thank you for purchasing COMFAST portable wireless product!  
CF-WR6000N is a network equipment based on IEEE802.11n protocol and compatible with IEEE802.11b/g protocol, it can provide up to 150Mbps transmission rate, equal to 3 times of common IEEE802.11g product transmission rate, CF-WR6000N 150Mbps mini wireless router have five application modes to introduce:

- 1. AP**  
CF-WR6000N as a supplement of Wired LAN, can realize the wired local area network wireless accessing function, plug-and-play.  
CF-WR6000N work as AP mode by default, this working mode no need any settings. Just need plug the CF-WR6000N into the power supply socket and connect the network cable well, then make computers/Wi-Fi mobile phones/tablet pcs through wireless way connect to the CF-WR6000N and surf the internet.  
Under this working mode, CF-WR6000N's wired RJ45 port used as a LAN port, computers can connect to CF-WR6000N through wire or wireless way. In order to avoid conflict with front end network equipment DHCP, CF-WR6000N's DHCP server is closed by default under this mode, if you want to login CF-WR6000N management center, you need manually set the computer's IP address.  
Application Environment: Hotels, School dorms etc.

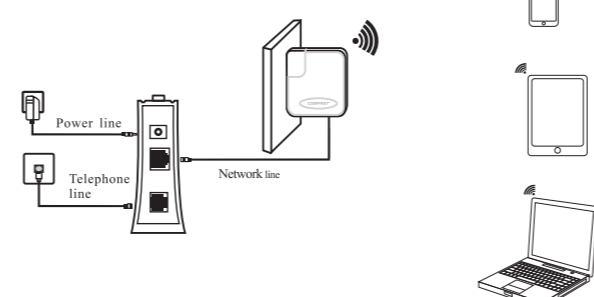


1.

Note: In most cases, Hotels, school dorms network all adopt dynamic distributing IP addresses, then computers/Wi-Fi mobile phones/tablet pcs' IP address and DNS address only need setting as automatically obtain. In few cases, computers/Wi-Fi mobile phones/tablet pcs' IP address and DNS address need setting as the address appointed by the administrator, more details please inquiry administrator.

- 2. Router**  
CF-WR6000N is a wireless router, its wired RJ45 port used as a WAN port, it can connect to the ADSL modem through a network cable, computers can connect with CF-WR6000N through wireless way and share the internet.  
Under this working mode, wired RJ45 port used as WAN port, computers can connect to CF-WR6000N only through wireless way. CF-WR6000N's DHCP server is open by default under this mode. Suggest setting the computer's IP address and DNS address as automatically obtain.

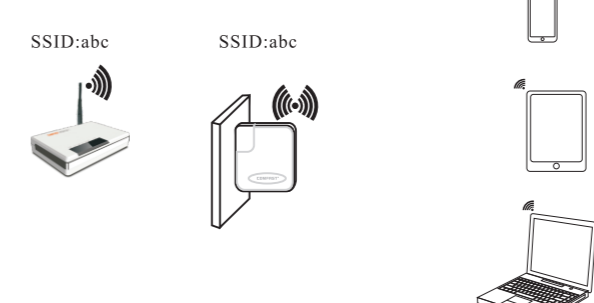
Application Environment: Common family, apartment etc.



- 3. Repeater**  
CF-WR6000N can be used to expand existing AP or wireless router's wireless signals coverage. Under this working mode, its wired RJ45 port used as LAN port, computers can connect to CF-WR6000N through wire or wireless way, and now the CF-WR6000N's SSID is the repeater connected from router's SSID. CF-WR6000N's DHCP server is closed by default under this working mode, if you want to login CF-WR6000N management center, you need manually set the

computer's IP address.

Application Environment: Duplex Apartment, Large spaces etc.



- 4. Bridge**  
CF-WR6000N's bridge mode is similar like the repeater mode, it is also used to expand existing AP or wireless router's wireless signals coverage. Under this working mode, its wired RJ45 port used as LAN port, computers can connect to CF-WR6000N through wire or wireless way. In order to avoid conflict with front end network equipment DHCP, CF-WR6000N's DHCP server is closed by default under this mode, if you want to login CF-WR6000N management center, you need manually set the computer's IP address.

Application Environment: Duplex Apartment, Large spaces etc.

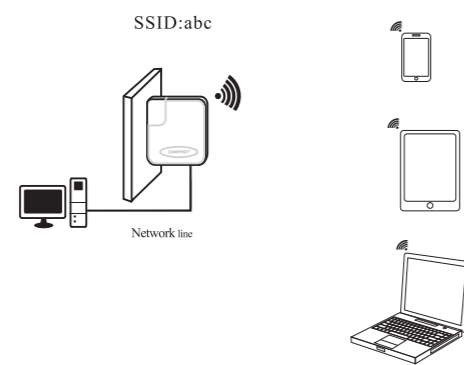


3.

### 5. Client

CF-WR6000N is equal to a wireless adapter, can be used to connect with wireless hotspot or wireless router. Under this working mode, its wired RJ45 port used as LAN port, computers can connect to CF-WR6000N only through a network cable. In order to avoid conflict with front end network equipment DHCP, CF-WR6000N's DHCP server is closed by default under this mode, if you want to login CF-WR6000N management center, you need manually set the computer's IP address.

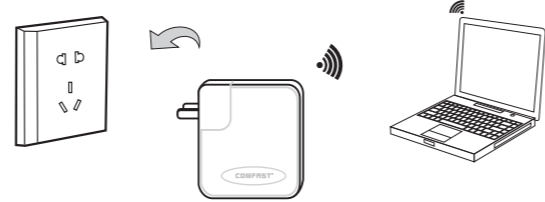
Application Environment: Network Multimedia Player, IPTV etc. network equipments which need through wireless way connect to the internet.



### Chapter 2 Product Hardware Installation

Hardware connection

1. Only need plug CF-WR6000N into the standard power socket.



2. After finishing the connection, please examine the indicator light is normally working:

Indicator light status	System status
Always being on	system normal working
Flashing	LAN/WAN port connecting well

If Indicator light does not work, it is abnormal, please check the indicator light itself.

1. In thunderstorm weather, please remove the equipment power and all link wires to avoid damage from lightning
2. Keep away from heat, keep ventilated
3. Pay special attention to making it waterproof when in storing, transporting and operating environment.

WARNING

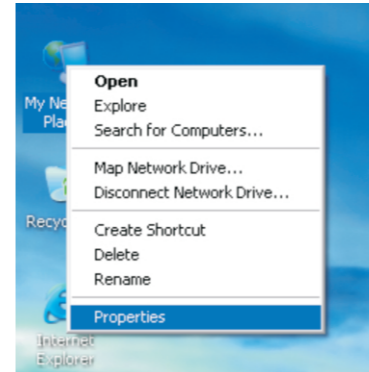
4.

### Chapter 3 How to login the equipment

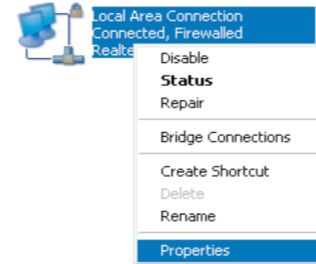
This chapter mainly introduce how to login the equipment and web setting page:

1. Use wireless adapter to connect

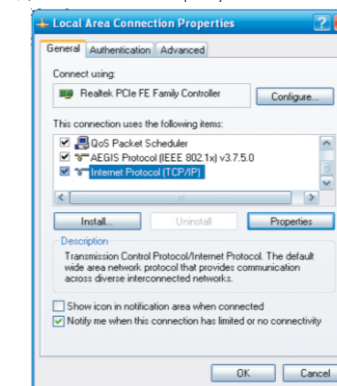
a. Set your computer wireless adapter's IP address, this setting use Windows XP as an example, right-click the "network neighborhood" icon on your computer desktop and select the "Properties" from the listing.



b. In the property window, right-click the "Local Area Connection" (if you are using wireless connection, please select the "Wireless Network Connection") and also select the "Properties" from the listing.



- c. In the Local Area Connection property window, firstly select the "Internet protocol(TCP/IP)", then click the "Properties" button.



- d. In the Internet protocol(TCP/IP) property window, please set your computer's IP address by selecting "Use the following IP address", as shown:



7.

Type in:  
IP address: 192.168.0.XXX (XXX can be 2-254)  
Subnet mask: 255.255.255.0

DNS Server: you can type in your local DNS server address(ask your ISP), also you can use the router as your DNS proxy server.  
After finishing the typing, please click "OK" button and save your settings in the Local Area Connection property window.

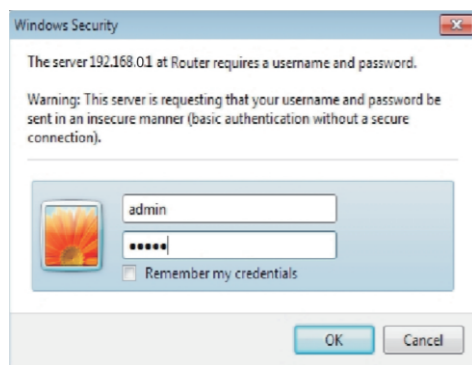
Note: Only under AP or 3G router working mode, you can login the equipment by using this method.

2. Login the web setting page

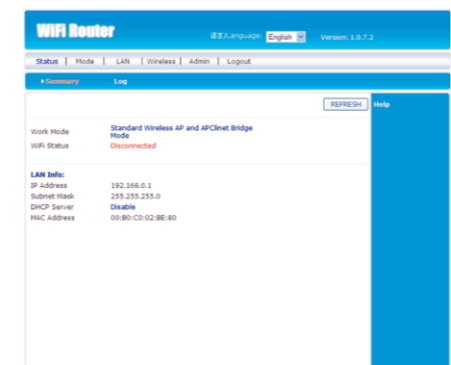
After setting your computer wireless adapter by using the above method, you can login the web setting page according to the following steps:

- a. Open your WEB IE and type the address "http://192.168.0.1" and Enter.

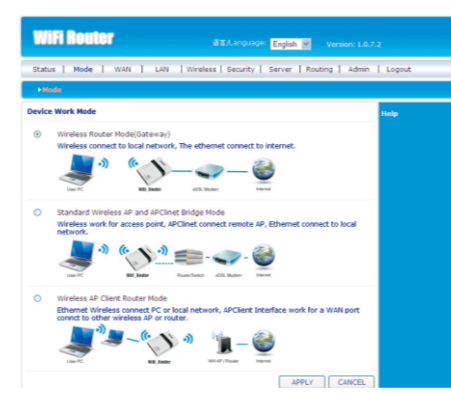
- b. In the popup window, type in the default user name : admin ; default password: admin ; then click "OK".



- c. If you typed user name and password are correct, the IE will go into the administrator main page, as shown below:



- d. If you select the first device work mode, that is wireless router mode, as shown below:



9.

- e. Click the "APPLY", as shown below:

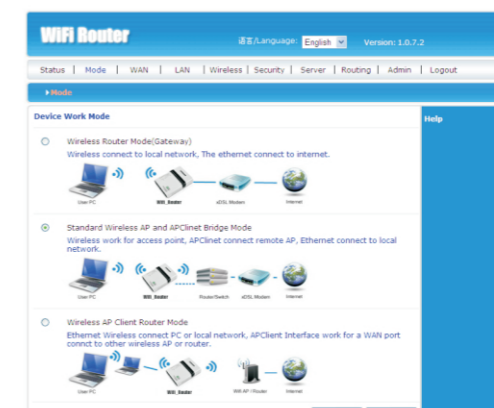


- f. Click the "APPLY", as shown below:

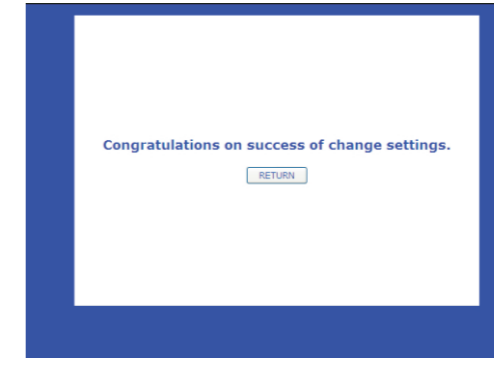


10.

- g. If you select the second device work mode, that is AP mode, as shown below:



- h. Click the "APPLY", then the AP mode restart and click "RETURN", shown as below:



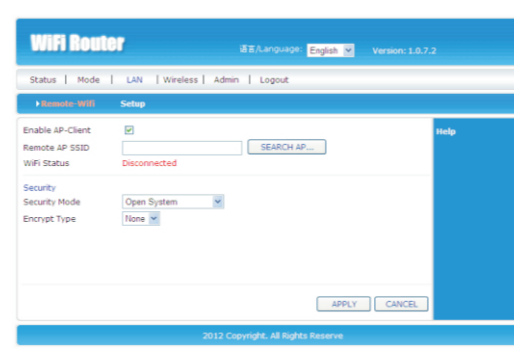
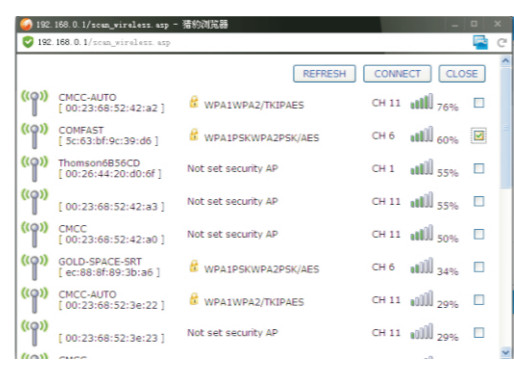
11.

- h.1 Click your computer desktop right corner wireless network icon and open "wireless network connection" dialogue box, refresh network list and select the existing connected network spot and click the button "connect(C)".



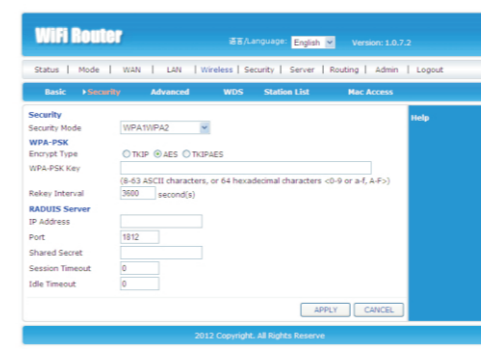
12.

- h.2 After the connecting, go into the client setting, shown as follow:



13.

- h.3 After the client setting, click "APPLY", go on the wireless password setting, and click "APPLY" finishing the settings, shown as follow:



14.

### Chapter 5 Warranty and after-sale service

COMFAST product have 1 year warranty since the date of purchase. Under the circumstance that this product haven't defect in material and craft, guarantee obligations just include maintenance and replacement of the bad products. Please read instruction manual carefully before using, we won't take any responsibility for wrongly use and Man-made damage. When you need maintenance, please show relevant document or receipt, otherwise our company won't provide any after-sale service. Our company won't maintain the product which had ever been taken apart or repaired by Not our company personnel. All products passed the strict inspection, if you find the product has overheating, deformation, crack or other abnormal phenomena when using, please stop the using and contact the dealer or contact us.

Warning: this product need keep away from fire source and heat source, keep placed environment ventilated, pay attention to waterproofing and dampproofing. Please do not take apart the product privately, if need professionals to maintain when there is a failure.

Shenzhen Four Seas Global Link Network Technology Co., Ltd.  
Address: 11CD, Hangdu Building, Huastu Road, Futian District, Shenzhen, China

15.