



Part Number: 08K8871

**ThinkPad 390X Quick
Reference and Service
Information**

Your Name:

Company Name:

Model Number:

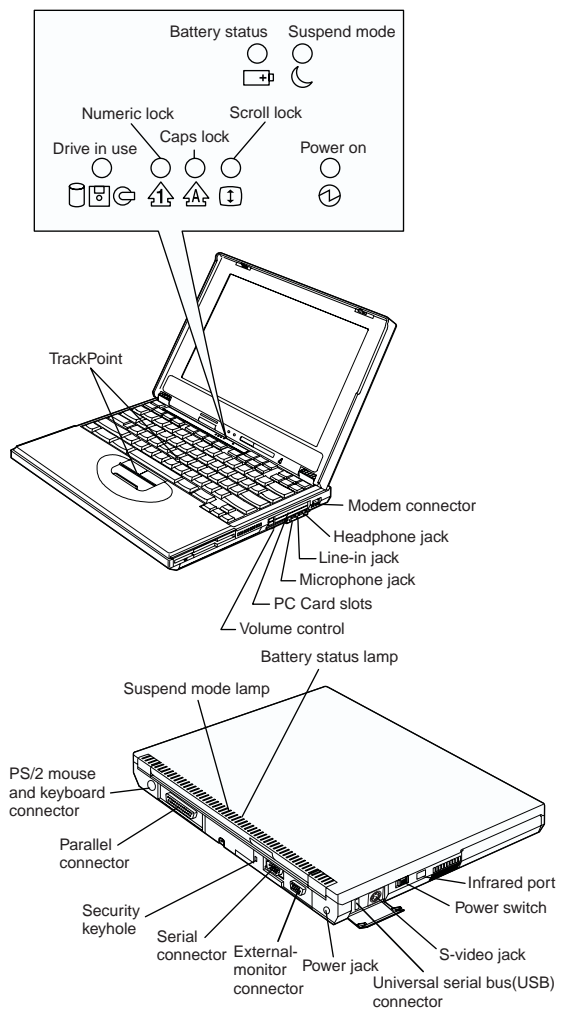
Serial Number:

Company or Reseller Service:

IBM Service Website:

IBM Service Number:

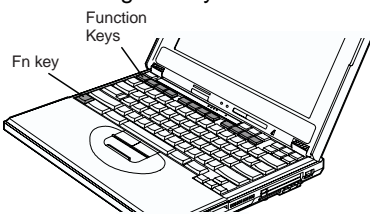
Location



Note: The modem feature is available only on select models.

Function Keys

You can change operational features instantly using the following Fn key and function key combinations:



| Fn + | Result |
|------|--|
| F2 | The window for the battery power status appears or disappears. (The Fuel-Gauge program must first be activated.) |
| F3 | The computer enters standby mode. |
| F4 | The computer enters suspend mode. |
| F7 | The display output location changes. |
| F11 | During battery-power operation, the power mode changes. |
| F12 | The computer enters hibernation mode. |

Getting Service

Always read the Solving Computer Problems chapter of your *User's Reference* before calling IBM.

During the warranty period, you can get help and information from the International Warranty Service (IWS) in your country. Before you call, fill out the front of this card. Also have:



- Exact wording of any error messages
- Hardware and software configuration information
- Description of the problem
- Information and serial numbers of any options installed on your system

International Warranty Service

This IBM product is eligible for service internationally wherever your machine type is sold by IBM. Your computer must be registered to receive international service. To register, call one of the following IWS offices:

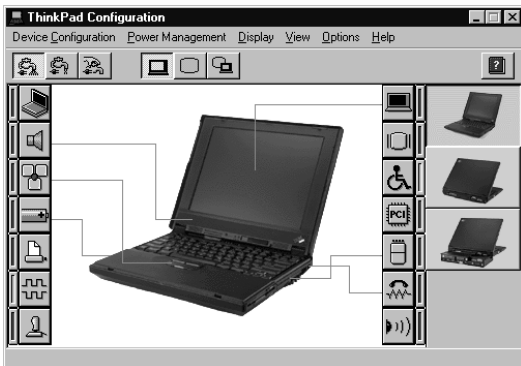
| | |
|--|----------------|
| Southeast Asia, Australia, New Zealand, and Hong Kong: | 61-2-9354-4171 |
| Canada, Latin America, and the U.S.: | 1-800-497-7426 |
| | or |
| | 248-740-1215 |
| Europe, Middle East, and Africa: | 44-1475-893638 |
| Japan, Korea, China (except Hong Kong), and Taiwan: | 81-462-73-7598 |


Help through a ThinkPad Web Site

- The latest information about ThinkPad computers:
 <http://www.ibm.com/thinkpad>
- Technical support information:
 <http://www.ibm.com/support>

ThinkPad Configuration Program

You can manipulate your hardware system settings with the ThinkPad Configuration program. Click **Start**, move the cursor to **Programs**, **ThinkPad**, then click **ThinkPad Configuration**.



For more information, click the **Help** button ().

TrackPoint Setting

You can customize such TrackPoint function as **Press-to Select**, **Sensitivity**, and **Scrolling**. Click **Start**, move the cursor to **Settings**, **Control Panel**, then double-click the **TrackPoint** icon.

Battery Status

You can see the battery status by using the Fuel Gauge program. Click **Start**, move the cursor to **Programs**, **ThinkPad**, then click **Fuel-Gauge**.

For Further Information

You can find the following information in your ThinkPad user's manuals:

| User's Reference |
|---|
| <ul style="list-style-type: none">• Getting familiar with your computer• Extending the features of your computer• Protecting your computer• Solving computer problems• Getting service• Features and specifications• Product warranties and notices |
| Online User's Guide |
| <ul style="list-style-type: none">• Using your computer outside your home country• Using audio, modem and DVD features• Protecting your computer• Using your computer with a battery pack• Using your computer with a PC Card• Resolving system resource conflicts• Solving computer problems• Installing software• Using system management• Handling the ThinkPad• Getting service |
| <p>Note: To see the Online User's Guide, click Start, move the cursor to Programs, ThinkPad 390X, then click ThinkPad 390X User's Guide.</p> |